

BEGA

84 254

Pole top luminaire



Project · Reference number

Date

Product data sheet

Application

LED pole top luminaire with asymmetrical flat beam light distribution. The asymmetrical and flat beam light distribution is suitable especially for the illumination of streets according to DIN EN 13201. For mounting heights 4000-5000 mm.

Product description

Luminaire made of aluminium alloy, aluminium and stainless steel
 Safety glass
 Silicone gasket
 Reflector made of pure anodised aluminium
 Attack angle adjustable in steps of 10° up to +90°
 For pole top ø 76 mm
 Slip fitter insert depth 95 mm
 2 x Connecting cable X05BQ-F 5 G 1[□]
 Cable length 5 m
 LED power supply unit
 220-240 V ~ 0/50-60 Hz
 DC 176-276 V
 DALI controllable
 A basic isolation exists between power cable and control line
 Safety class I
 Protection class IP 66
 Dust-tight and protection against strong water jets
 Impact strength IK10
 Protection against mechanical impacts < 20 joule
 – Safety mark
 – Conformity mark
 Weight: 11.4 kg

Inrush current

Inrush current: 12 A / 24.2 μs
 Maximum number of luminaires of this type per miniature circuit breaker:
 B 10A: 50 luminaires
 B 16A: 50 luminaires
 C 10A: 50 luminaires
 C 16A: 50 luminaires

Lamp

Module connected wattage 2x 15.4 W
 Luminaire connected wattage 36 W
 Rated temperature $t_a = 25\text{ °C}$
 Ambient temperature $t_{a,max} = 55\text{ °C}$

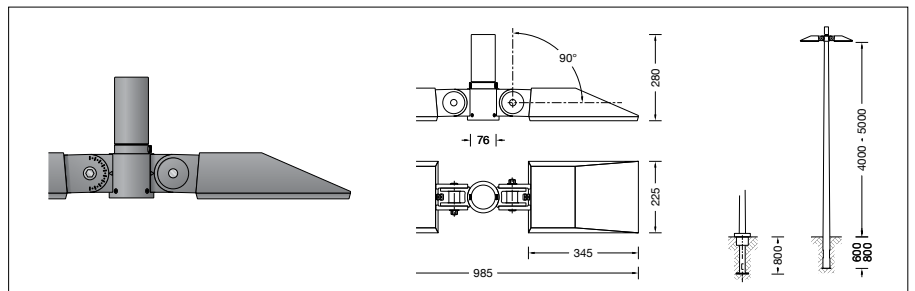
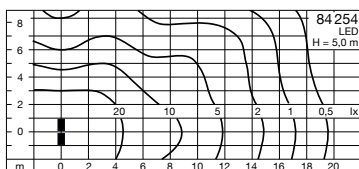
84 254 K4

Module designation 4x LED-0862/840
 Colour temperature 4000 K
 Colour rendering index CRI > 80
 Module luminous flux 6180 lm
 Luminaire luminous flux 5060 lm
 Luminaire luminous efficiency 140,6 lm/W

84 254 K3

Module designation 4x LED-0862/830
 Colour temperature 3000 K
 Colour rendering index CRI > 80
 Module luminous flux 6000 lm
 Luminaire luminous flux 4888 lm
 Luminaire luminous efficiency 135,8 lm/W

Light distribution



Service life · Ambient temperature

Rated temperature $t_a = 25\text{ °C}$
 LED psu: > 50,000h
 LED module: > 200,000h (L 80 B 50)
 100,000h (L 90 B 50)

Ambient temperature $t_{a,max} = 55\text{ °C}$ (100 %)
 LED psu: 50,000h
 LED module: 46,000h (L 80 B 50)
 70,000h (L 70 B 50)

Light technique

Luminaire data for the light planning program DIALux for outdoor lighting, street lighting and indoor lighting as well as luminaire data in EULUMDAT- and IES-format you will find on the BEGA web page www.bega.com.

Article No. 84 254

LED colour temperature optionally 3000K or 4000K
 3000 K – Article number + **K3**
 4000 K – Article number + **K4**

Colour graphite or silver
 graphite – article number
 silver – article number + **A**

Accessories

For this luminaire we recommend the following BEGA luminaire poles:
 Tapered aluminium poles · lacquered with access door and C-clamp
70 914 Pole with anch.section H 4000 mm
70 725 Pole with anch.section H 4500 mm
70 915 Pole with anch.section H 5000 mm
70 791 Pole with baseplate H 4000 mm
70 792 Pole with baseplate H 4500 mm
70 794 Pole with baseplate H 5000 mm

Cylindrically stepped aluminium poles, lacquered with door und C rail
70 901 Pole with anch.section H 4000 mm
70 903 Pole with anch.section H 5000 mm
70 900 Pole with baseplate H 4000 mm
70 902 Pole with baseplate H 5000 mm

For suitable connection boxes please see the instructions for use of the luminaire poles.