

BEGA**84 249**

Pole top luminaire



Project · Reference number

Date

Product data sheet

Application

LED pole top luminaire with asymmetrical light distribution for in-depth illumination of surfaces and squares.

The adjustable attack angle allows a precise alignment of the light distribution to the surface to be illuminated.

For mounting heights 4000 - 6000 mm.

Product description

Luminaire made of aluminium alloy, aluminium and stainless steel

Clear safety glass

Silicone gasket

Reflector made of pure anodised aluminium

Attack angle adjustable in steps

of 10° up to +90°

For pole top ø 76 mm

Slip fitter insert depth 95 mm

Connecting cable X05BQ-F 5 G 1[□]

Cable length 6 m

LED power supply unit

220-240 V ~ 0/50-60 Hz

DC 176-276 V

DALI controllable

A basic isolation exists between power cable and control line

BEGA Thermal Control®

Temporary thermal regulation to protect temperature-sensitive components without switching off the luminaire

Safety class I

Protection class IP 66

Dust-tight and protection against strong water jets

Impact strength IK10

Protection against mechanical

impacts < 20 joule

- Safety mark

- Conformity mark

Horizontal wind catching area: 0.094 m²

Weight: 11.4 kg

Inrush current

Inrush current: 10 A / 200 µs

Maximum number of luminaires of this type per miniature circuit breaker:

B 10A: 19 luminaires

B 16A: 30 luminaires

C 10A: 31 luminaires

C 16A: 51 luminaires

Lamp

Module connected wattage 2x 55.3 W

Luminaire connected wattage 124 W

Rated temperature $t_a = 25\text{ °C}$

Ambient temperature $t_{a\text{max}} = 25\text{ °C}$

84 249 K3

Module designation 2x LED-0773/830

Colour temperature 3000 K

Colour rendering index CRI > 80

Module luminous flux 15240 lm

Luminaire luminous flux 13350 lm

Luminaire luminous efficiency 107,7 lm/W

84 249 K4

Module designation 2x LED-0773/840

Colour temperature 4000 K

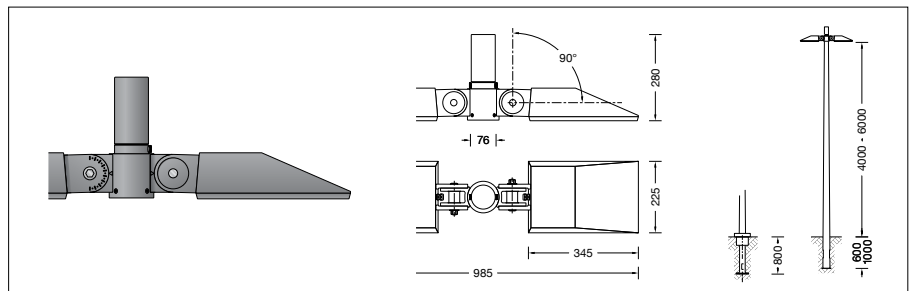
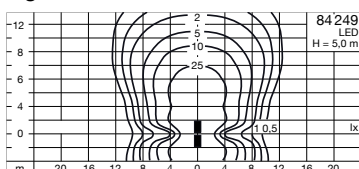
Colour rendering index CRI > 80

Module luminous flux 15240 lm

Luminaire luminous flux 13350 lm

Luminaire luminous efficiency 107,7 lm/W

Light distribution



Accessories

For this luminaire we recommend the following BEGA luminaire poles:

Tapered aluminium poles · lacquered with access door and C-clamp

70914 Pole with anch.section H 4000 mm

70725 Pole with anch.section H 4500 mm

70915 Pole with anch.section H 5000 mm

70916 Pole with anch.section H 6000 mm

70791 Pole with baseplate H 4000 mm

70792 Pole with baseplate H 4500 mm

70794 Pole with baseplate H 5000 mm

Cylindrically stepped aluminium poles, lacquered with door und C rail

70901 Pole with anch.section H 4000 mm

70903 Pole with anch.section H 5000 mm

70905 Pole with anch.section H 6000 mm

70900 Pole with baseplate H 4000 mm

70902 Pole with baseplate H 5000 mm

70904 Pole with baseplate H 6000 mm

For suitable connection boxes please see the instructions for use of the luminaire poles.

Service life · Ambient temperature

Rated temperature $t_a = 25\text{ °C}$

LED psu: > 50,000 h

LED module: 83,000 h (L 80 B 50)

100,000 h (L 70 B 50)

Ambient temperature $t_{a\text{max}} = 25\text{ °C}$ (100 %)

LED psu: 50,000 h

LED module: 83,000 h (L 80 B 50)

100,000 h (L 70 B 50)

Light technique

Luminaire data for the light planning program DIALux for outdoor lighting, street lighting and indoor lighting as well as luminaire data in EULUMDAT- and IES-format you will find on the BEGA web page www.bega.com.

Article No. 84 249

LED colour temperature optionally 3000 K

or 4000 K

3000 K – Article number + **K3**

4000 K – Article number + **K4**

Colour graphite or silver

graphite – article number

silver – article number + **A**