

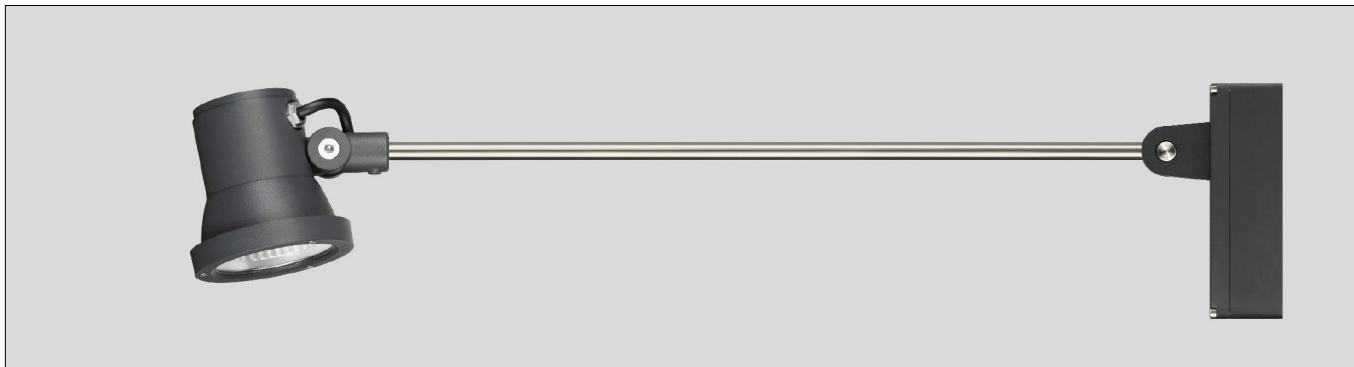
**BEGA****77 756**

Floodlight



Project · Reference number

Date



## Product data sheet

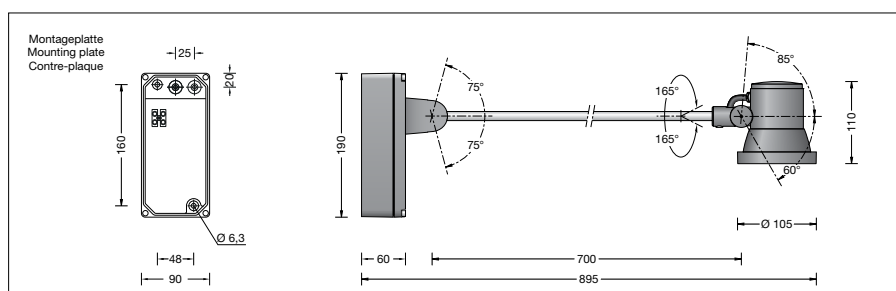
### Application

Floodlight with mounting box and outrigger arm for installation on ceilings and walls in interior and exterior application.

The adjustability of the outrigger arm allows a variety of burning positions with which most diverse lighting tasks can be solved.

### Product description

Luminaire made of aluminium alloy, aluminium and stainless steel  
 Clear safety glass  
 Silicone gasket  
 Reflector made of pure anodised aluminium  
 Adjustment range:  
 Joint - mounting box:  $\pm 75^\circ$  in steps of  $15^\circ$   
 Swivel joint - outrigger arm:  $\pm 165^\circ$   
 Floodlight housing:  $+85^\circ / -60^\circ$  infinitely adjustable  
 Mounting box with 2 fixing holes  
 $\varnothing 6.3 \text{ mm} \cdot 48 \times 160 \text{ mm}$  spacing  
 2 cable entries for through-wiring of mains supply cable  $\varnothing 7\text{-}10.5 \text{ mm}$ , max. 5G1.5<sup>□</sup>  
 Connection terminal 2.5<sup>□</sup>  
 Earth conductor connection  
 LED power supply unit  
 220-240 V  $\sim$  0/50-60 Hz  
 DC 176-280 V  
 DALI controllable  
 A basic isolation exists between power cable and control line  
 Safety class I  
 Protection class IP 65  
 Dust-tight and protection against water jets  
 Impact strength IK07  
 Protection against mechanical impacts  $< 2 \text{ joule}$   
 - Safety mark  
**CE** - Conformity mark  
 Wind catching area: 0.028 m<sup>2</sup>  
 Weight: 2.2 kg



### Lamp

Module connected wattage	8.2 W
Luminaire connected wattage	10.3 W
Rated temperature	$t_a = 25^\circ \text{C}$
Ambient temperature	$t_{a \text{ max}} = 40^\circ \text{C}$

On request we can offer you modifications for environments with higher temperatures as a customized product.

### 77 756 K4

Module designation	LED-0329/940
Colour temperature	4000 K
Colour rendering index	CRI $> 80$
Module luminous flux	1080 lm
Luminaire luminous flux	763 lm
Luminaire luminous efficiency	74,1 lm/W

### 77 756 K3

Module designation	LED-0329/930
Colour temperature	3000 K
Colour rendering index	CRI $> 90$
Module luminous flux	1040 lm
Luminaire luminous flux	735 lm
Luminaire luminous efficiency	71,4 lm/W

### Lifetime of the LED

Ambient temperature  $t_a = 25^\circ \text{C}$   
 - at 195,000h: L70B50

max. ambient temperature  $t_a = 40^\circ \text{C}$   
 - at 180,000h: L70B50

### Inrush current

Inrush current: 5 A / 50  $\mu\text{s}$   
 Maximum number of luminaires of this type per miniature circuit breaker:  
 B10A: 31 luminaires  
 B16A: 50 luminaires  
 C10A: 52 luminaires  
 C16A: 85 luminaires

### Lighting technology

Half beam angle  $56^\circ$   
 Luminaire data for the light planning program DIALux for outdoor lighting, street lighting and interior lighting as well as luminaire data in EULUMDAT and IES format are available on our website [www.bega.com](http://www.bega.com).

### Article No. 77 756

LED colour temperature optionally 4000K or 3000K

4000 K – Article number + **K4**  
 3000 K – Article number + **K3**

Colour graphite or silver  
 graphite – article number  
 silver – article number + **A**

### Accessories

**70 050** Exchangeable lens flat beam  
**70 755** Shield

For the accessories a separate instructions for use can be provided upon request.

### Light distribution

