

BEGA**50 594.4**

Wall washer for indoor use



Project · Reference number

Date

Product data sheet

Application

LED wall washer · indoor luminaire for the glare free illumination of wall surfaces with the mounting surface being the reflection surface. The light emits upwards and downwards.

Product description

Die-cast aluminium and aluminium housing, finish enamel palladium
 Crystal glass, inside matt
 Reflector made of pure anodised aluminium
 2 mounting holes \varnothing 4.8 mm
 Distance apart 200 mm
 2 cable entries for through-wiring for mains cable up to \varnothing 8 mm max. 3×1.5^2
 Connection terminal 2.5^2
 Earth conductor connection
 LED power supply unit
 220-240 V \sim 0/50-60 Hz
 DC 176-276 V
 Safety class I
 – Safety mark
 – Conformity mark
 Weight: 1.9 kg

Inrush current

Inrush current: 5 A / 50 μ s
 Maximum number of luminaires of this type per miniature circuit breaker:
 B 10A: 30 luminaires
 B 16A: 50 luminaires
 C 10A: 52 luminaires
 C 16A: 85 luminaires

Lamp

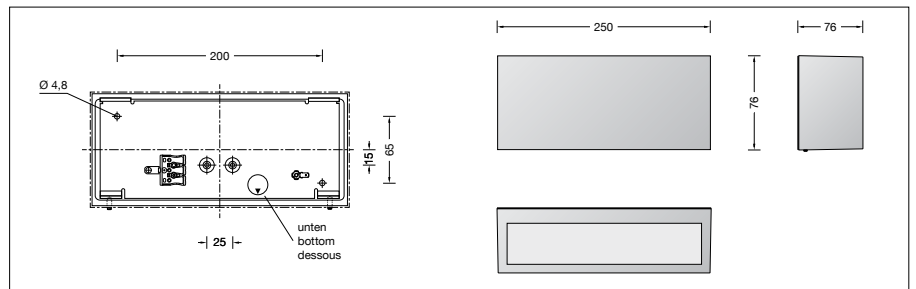
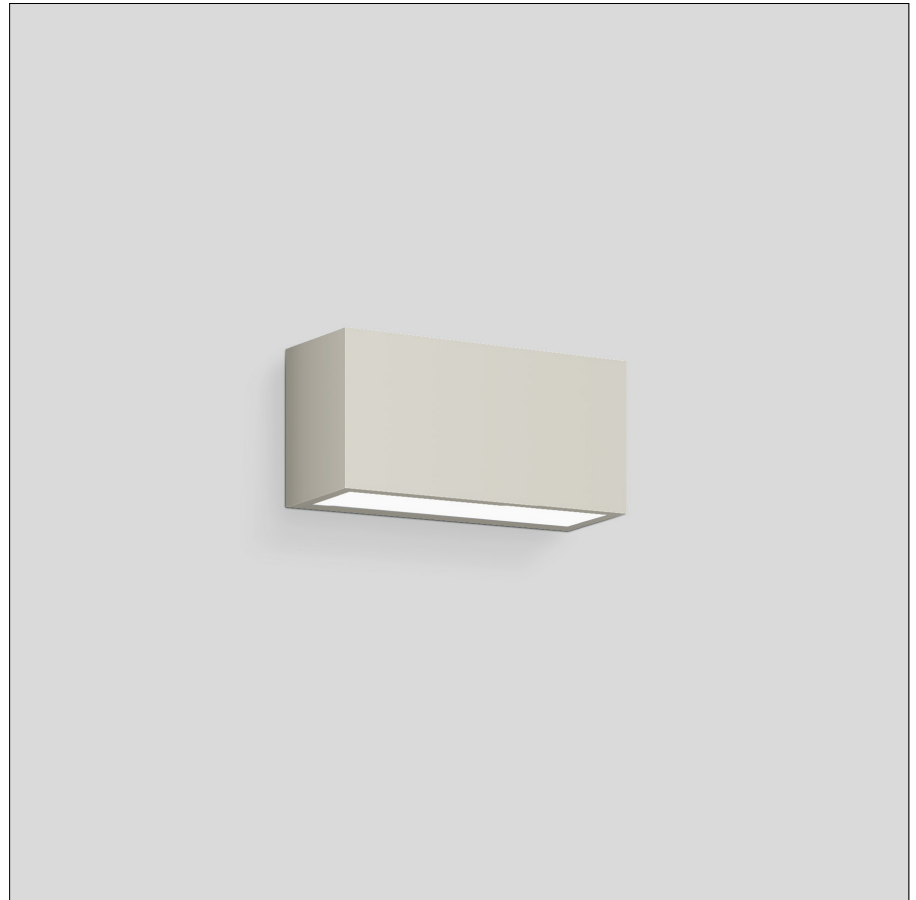
Module connected wattage 25.2 W
 Luminaire connected wattage 29 W
 Rated temperature $t_a = 25^\circ\text{C}$
 Ambient temperature $t_{a \text{ max}} = 25^\circ\text{C}$

50 594.4 K3

Module designation LED-0696/930
 Colour temperature 3000 K
 Colour rendering index CRI > 90
 Module luminous flux 3160 lm
 Luminaire luminous flux 2244 lm
 Luminaire luminous efficiency 77,4 lm/W

50 594.4 K4

Module designation LED-0696/940
 Colour temperature 4000 K
 Colour rendering index CRI > 90
 Module luminous flux 3280 lm
 Luminaire luminous flux 2330 lm
 Luminaire luminous efficiency 80,3 lm/W



Service life of the LED

max. ambient temperature $t_a = 25^\circ\text{C}$
 – at 367,000h: L70 B50

Light technique

Luminaire data for the light planning program DIALux for outdoor lighting, street lighting and indoor lighting as well as luminaire data in EULUMDAT- and IES-format you will find on the BEGA web page www.bega.com.

Article No. 50 594.4

LED colour temperature optionally 3000 K or 4000 K
 3000 K – Article number + **K3**
 4000 K – Article number + **K4**

Finish options

- Enamel, white Code number **.1**
- Enamel, palladium Code number **.4**
- Enamel, velvet black Code number **.5**