

**BEGA****50 265.3**

Wall luminaire for indoor use



Project · Reference number

Date

## Product data sheet

### Application

Shielded LED wall luminaire · indoor luminaire made of hand-blown opal glass, satin matt with metal shield, for many lighting tasks. The light emits upwards and downwards. The used LED technique offers durability and optimal light output with low power consumption at the same time.

### Product description

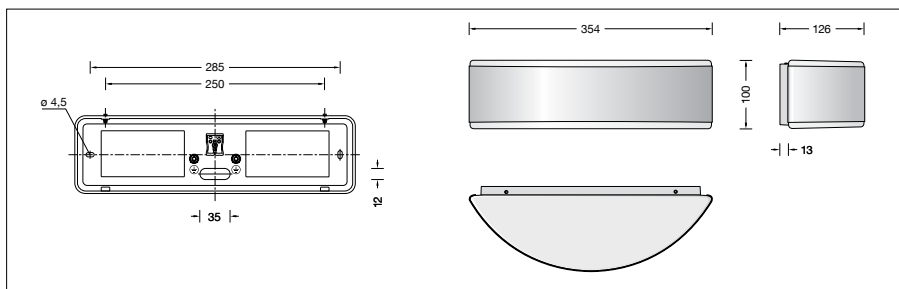
Metal housing, finish  
white enamel  
Hand-blown opal glass, satin matt  
Metal shield, polished stainless steel finish  
2 elongated fixing holes  
Width 4,5 mm · 285 mm spacing  
1 cable entry for through-wiring  
for mains cable  
Connecting terminals 2.5<sup>□</sup>  
Earth conductor connection  
LED-Module for mains voltage  
220-230 V ~ 50/60 Hz  
Safety class I  
 – Safety mark  
 – Conformity mark  
Weight: 1.8 kg

### Lamp

Luminaire connected wattage	24 W
Rated temperature	$t_a = 25$ °C
Ambient temperature	$t_{a \max} = 45$ °C
Service life criteria	50 000 h/L <sub>70</sub>

### 50 265.3 K3

Module designation	2x LED-0607/830
Colour temperature	3000 K
Colour rendering index	$R_a > 80$
Module luminous flux	2160 lm
Luminaire luminous flux	1282 lm
Luminaire luminous efficiency	53,4 lm/W



### Light technique

Luminaire data for the light planning program DIALux for outdoor lighting, street lighting and indoor lighting as well as luminaire data in EULUMDAT- and IES-format you will find on the BEGA web page [www.bega.com](http://www.bega.com).

### Article No. 50 265.3

Finish options

- Enamel, white
- Stainless steel
- Polished stainless steel

Code number **.1**Code number **.2**Code number **.3**