

BEGA**50 265.2**

Wall luminaire for indoor use



Project · Reference number

Date

Product data sheet

Application

Shielded LED wall luminaire · indoor luminaire
made of hand-blown opal glass, satin matt with
metal shield, for many lighting tasks.
The light emits upwards and downwards.

Product description

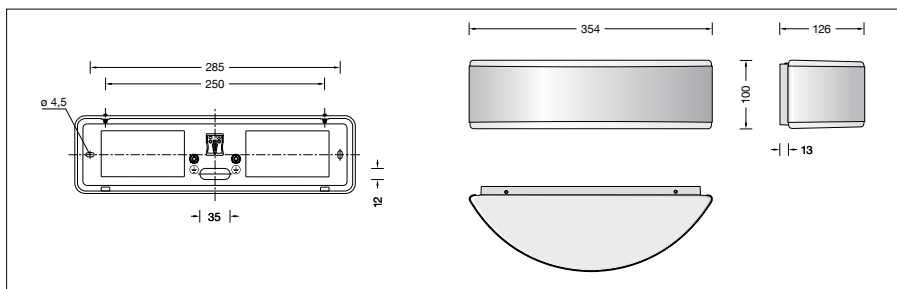
Metal housing, finish
white enamel
Hand-blown opal glass, satin matt
Metal shield, stainless steel finish
2 elongated fixing holes
Width 4.5 mm · 285 mm spacing
1 cable entry for through-wiring
for mains cable
Connecting terminals 2.5[□]
Earth conductor connection
LED-Module for mains voltage
220-230 V ~ 50/60 Hz
Safety class I
 – Safety mark
 – Conformity mark
Weight: 1.8 kg

Lamp

Luminaire connected wattage 24 W
Rated temperature $t_a = 25$ °C
Ambient temperature $t_{a,max} = 45$ °C
Service life criteria 50 000 h/L₇₀

50 265.2 K3

Module designation 2x LED-0607/830
Colour temperature 3000 K
Colour rendering index $R_a > 80$
Module luminous flux 2160 lm
Luminaire luminous flux 1282 lm
Luminaire luminous efficiency 53,4 lm/W



Light technique

Luminaire data for the light planning program
DIALux for outdoor lighting, street lighting and
indoor lighting as well as luminaire data in
EULUMDAT- and IES-format you will find on the
BEGA web page www.bega.com.

Article No. 50 265.2

Finish options

- Enamel, white
- Stainless steel
- Polished stainless steel

Code number **.1**Code number **.2**Code number **.3**