

BEGA**50 265.1**

Wall luminaire for indoor use



Project · Reference number

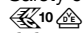
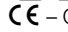
Date

Product data sheet

Application

Shielded LED wall luminaire · indoor luminaire
made of hand-blown opal glass, satin matt with
metal shield, for many lighting tasks.
The light emits upwards and downwards.

Product description

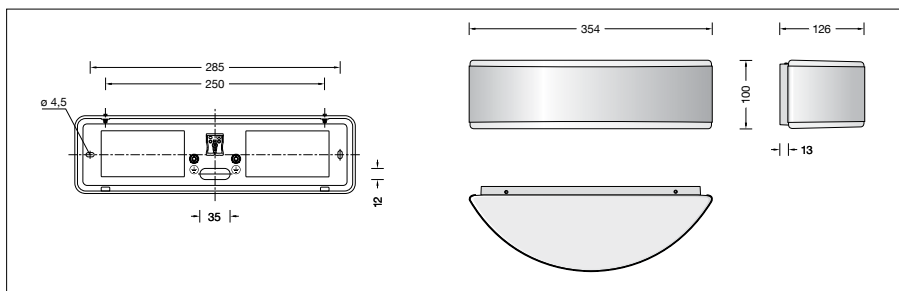
Metal housing, finish
white enamel
Hand-blown opal glass, satin matt
Metal shield,
enamel white finish
2 elongated fixing holes
Width 4.5 mm · 285 mm spacing
1 cable entry for through-wiring
for mains cable
Connecting terminals 2.5[□]
Earth conductor connection
LED-Module for mains voltage
220-230 V ~ 50/60 Hz
Safety class I
 – Safety mark
 – Conformity mark
Weight: 1.8 kg

Lamp

Luminaire connected wattage	24 W
Rated temperature	$t_a = 25 \text{ }^\circ\text{C}$
Ambient temperature	$t_{a \text{ max}} = 45 \text{ }^\circ\text{C}$
Service life criteria	50 000 h/L ₇₀

50 265.1 K3

Module designation	2x LED-0607/830
Colour temperature	3000 K
Colour rendering index	$R_a > 80$
Module luminous flux	2160 lm
Luminaire luminous flux	1282 lm
Luminaire luminous efficiency	53,4 lm/W



Light technique

Luminaire data for the light planning program
DIALux for outdoor lighting, street lighting and
indoor lighting as well as luminaire data in
EULUMDAT- and IES-format you will find on the
BEGA web page www.bega.com.

Article No. 50 265.1

Finish options

- Enamel, white
- Stainless steel
- Polished stainless steel

Code number **.1**
Code number **.2**
Code number **.3**