

BEGA**50 201.4**

Wall washer for indoor use



Project · Reference number

Date

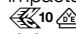
Product data sheet

Application

LED wall washer · indoor luminaire with asymmetrical light distribution for illuminating wall and ceiling surfaces.

The luminaire can be installed with the light distribution opening upwards or downwards.

Product description

Die-cast aluminium and aluminium housing, finish enamel palladium
 Matt safety glass
 Reflector made of pure anodised aluminium
 2 mounting holes \varnothing 4.5 mm
 Distance apart 200 mm
 2 cable entries for through-wiring of mains supply cable \varnothing 7-10.5 mm, max. 5 G 1.5[□]
 Connecting terminal and earth conductor terminal 2.5[□]
 2-pole connecting terminal for digital control
 LED power supply unit
 220-240 V \sim 0/50-60 Hz
 DC 170-276 V
 DALI controllable
 A basic isolation exists between power cable and control line
 Safety class I
 Impact strength IK07
 Protection against mechanical impacts < 2 joule
 – Safety mark
CE – Conformity mark
 Weight: 2.9 kg

Inrush current

Inrush current: 20 A / 400 μ s

Maximum number of luminaires of this type per miniature circuit breaker:

B 10A: 9 luminaires
 B 16A: 15 luminaires
 C 10A: 16 luminaires
 C 16A: 25 luminaires

Lamp

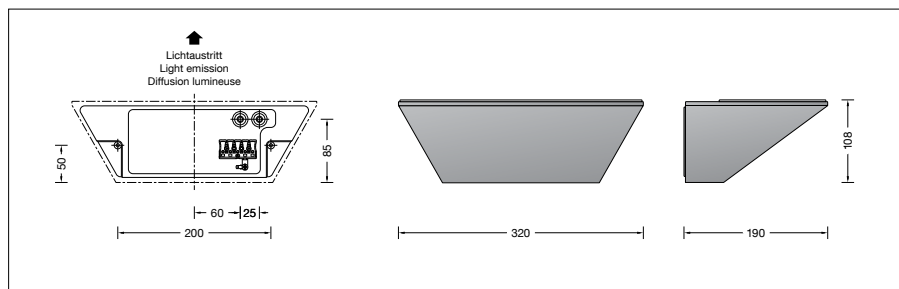
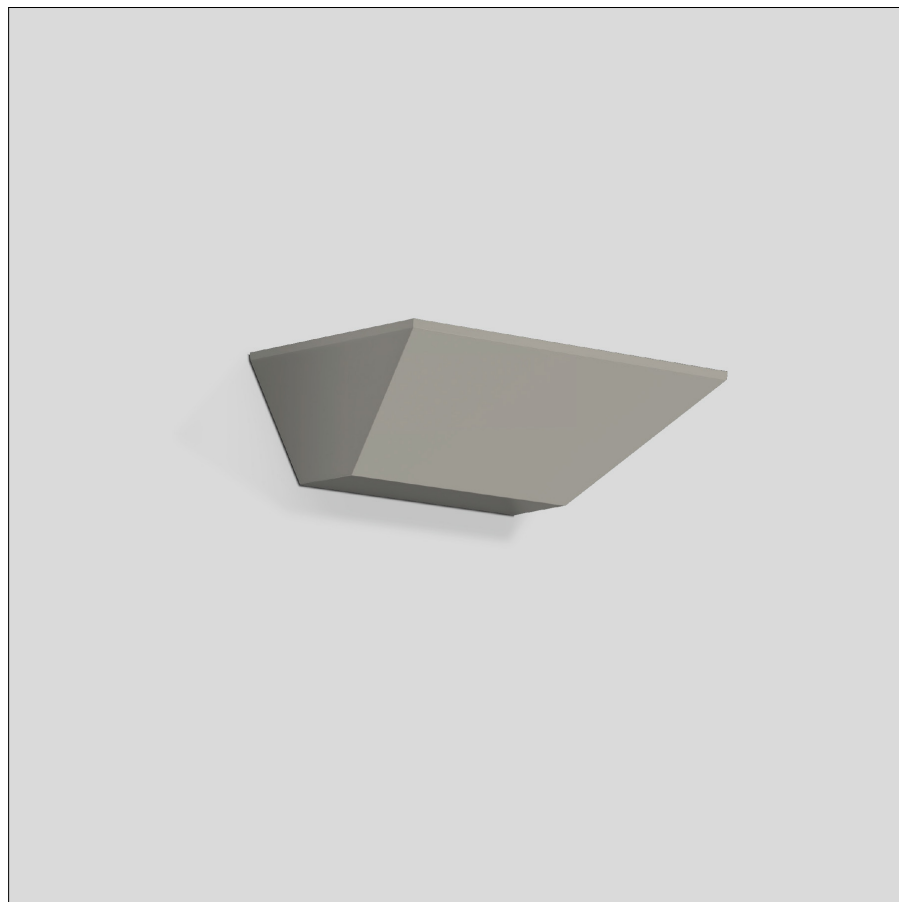
Module connected wattage	33.6 W
Luminaire connected wattage	38 W
Rated temperature	$t_a = 25^\circ\text{C}$
Ambient temperature	$t_{a, \text{max}} = 25^\circ\text{C}$

50 201.4 K3

Module designation	LED-0609/930
Colour temperature	3000 K
Colour rendering index	CRI > 90
Module luminous flux	4055 lm
Luminaire luminous flux	2822 lm
Luminaire luminous efficiency	74,3 lm/W

50 201.4 K4

Module designation	LED-0609/940
Colour temperature	4000 K
Colour rendering index	CRI > 90
Module luminous flux	4200 lm
Luminaire luminous flux	2926 lm
Luminaire luminous efficiency	77 lm/W



Service life of the LED

max. ambient temperature $t_a = 25^\circ\text{C}$
 – at 89,000 h: L70 B50

BEGA Thermal control[®] protects temperature-sensitive luminaire components by temporarily limiting the nominal power to 58 % when max. $t_a = 50^\circ\text{C}$. Thus, these components reach a service life of minimum 50,000 h even if operated in a high temperature range.

Light technique

Luminaire data for the light planning program DIALux for outdoor lighting, street lighting and indoor lighting as well as luminaire data in EULUMDAT- and IES-format you will find on the BEGA web page www.bega.com.

Article No. 50 201.4

LED colour temperature optionally 3000 K or 4000 K
 3000 K – Article number + **K3**
 4000 K – Article number + **K4**

Finish options

- Enamel, white Code number **.1**
- Enamel, palladium Code number **.4**
- Enamel, velvet black Code number **.5**