

**BEGA****50 200.4**

Wall washer for indoor use



Project · Reference number

Date

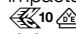
## Product data sheet

### Application

LED wall washer · indoor luminaire with asymmetrical light distribution for illuminating wall and ceiling surfaces.

The luminaire can be installed with the light distribution opening upwards or downwards.

### Product description

Die-cast aluminium and aluminium housing, finish enamel palladium  
 Matt safety glass  
 Reflector made of pure anodised aluminium  
 2 mounting holes  $\varnothing$  4.5 mm  
 Distance apart 190 mm  
 2 cable entries for through-wiring of mains supply cable  $\varnothing$  7-10.5 mm, max. 5 G 1.5<sup>□</sup>  
 Connection terminal 2.5<sup>□</sup>  
 Earth conductor connection  
 2-pole connecting terminal for digital control  
 LED power supply unit  
 220-240 V  $\sim$  0/50-60 Hz  
 DC 176-280 V  
 DALI controllable  
 A basic isolation exists between power cable and control line  
 Safety class I  
 Impact strength IK07  
 Protection against mechanical impacts < 2 joule  
 – Safety mark  
**CE** – Conformity mark  
 Weight: 1.7 kg

### Inrush current

Inrush current: 5 A / 50  $\mu$ s

Maximum number of luminaires of this type per miniature circuit breaker:

B 10A: 31 luminaires  
 B 16A: 50 luminaires  
 C 10A: 52 luminaires  
 C 16A: 85 luminaires

### Lamp

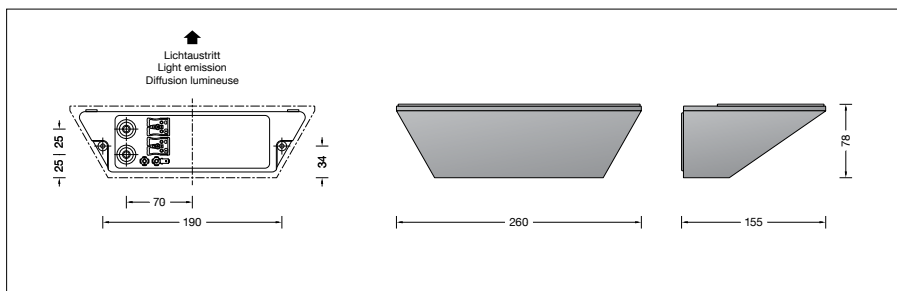
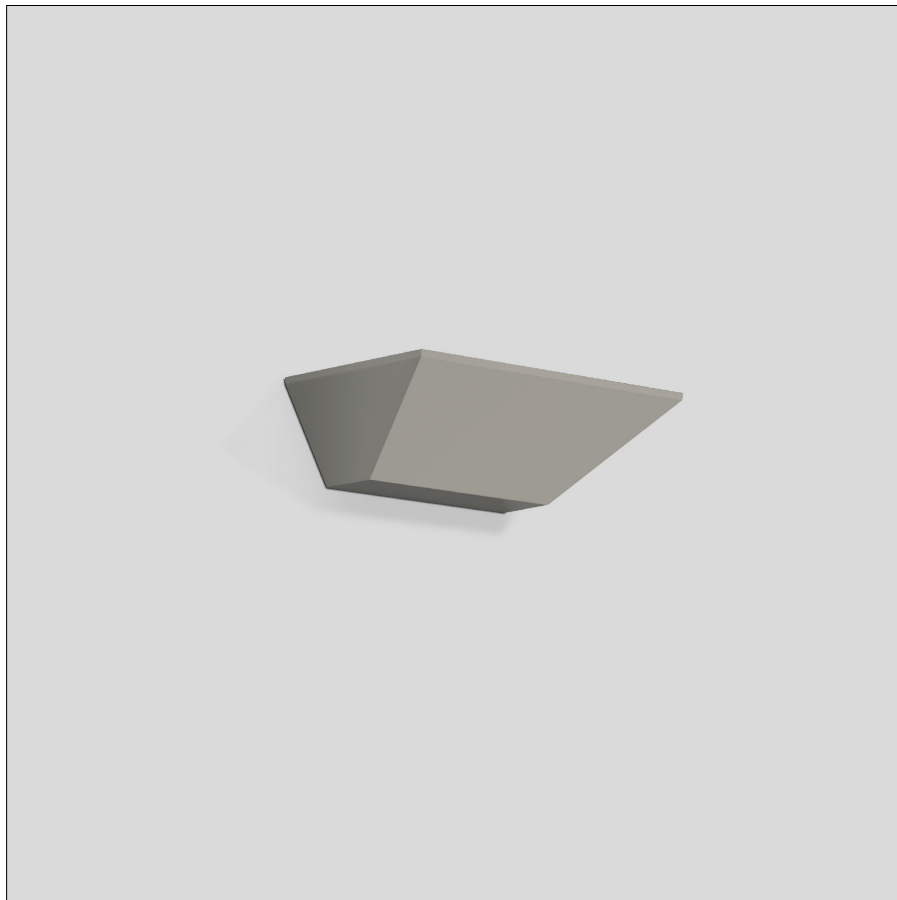
Module connected wattage	16.5 W
Luminaire connected wattage	19.4 W
Rated temperature	$t_a = 25$ °C
Ambient temperature	$t_{a,max} = 35$ °C

### 50 200.4 K3

Module designation	LED-0590/930
Colour temperature	3000 K
Colour rendering index	CRI > 90
Module luminous flux	2040 lm
Luminaire luminous flux	1725 lm
Luminaire luminous efficiency	88,9 lm/W

### 50 200.4 K4

Module designation	LED-0590/940
Colour temperature	4000 K
Colour rendering index	CRI > 90
Module luminous flux	2110 lm
Luminaire luminous flux	1784 lm
Luminaire luminous efficiency	92 lm/W



### Service life of the LED

Ambient temperature  $t_a = 25$  °C  
 – at 270,000h: L70B50  
 max. ambient temperature  $t_a = 35$  °C  
 – at 148,000h: L70B50

### Light technique

Luminaire data for the light planning program DIALux for outdoor lighting, street lighting and indoor lighting as well as luminaire data in EULUMDAT- and IES-format you will find on the BEGA web page [www.bega.com](http://www.bega.com).

### Article No. 50 200.4

LED colour temperature optionally 3000 K or 4000 K  
 3000 K – Article number + **K3**  
 4000 K – Article number + **K4**

### Finish options

- Enamel, white Code number **.1**
- Enamel, palladium Code number **.4**
- Enamel, velvet black Code number **.5**