

BEGA**50 199.4**

Wall washer for indoor use



Project · Reference number

Date

Product data sheet

Application

LED wall washer · indoor luminaire with symmetrical light distribution for the illumination of wall surfaces with the mounting surface being the reflection surface.

The luminaire can be installed with the light distribution opening upwards or downwards.

Product description

Die-cast aluminium and aluminium housing, finish enamel palladium

Matt safety glass

Reflector made of pure anodised aluminium

2 mounting holes \varnothing 4.5 mm

Distance apart 200 mm

2 cable entries for through-wiring of mains

supply cable \varnothing 7-10.5 mm, max. 5G1.5[□]

Connecting terminal and

earth conductor terminal 2.5[□]

2-pole connecting terminal for

digital control

LED power supply unit

220-240 V \sim 0/50-60 Hz

DC 170-276 V

DALI controllable

A basic isolation exists between power cable and control line

Safety class I

Impact strength IK07

Protection against mechanical

impacts < 2 joule

– Safety mark

CE – Conformity mark

Weight: 2.9 kg

Inrush current

Inrush current: 20 A / 400 μ s

Maximum number of luminaires of this type per miniature circuit breaker:

B 10A: 9 luminaires

B 16A: 15 luminaires

C 10A: 16 luminaires

C 16A: 25 luminaires

Lamp

Module connected wattage 33.6 W

Luminaire connected wattage 38 W

Rated temperature $t_a = 25$ °C

Ambient temperature $t_{a,max} = 45$ °C

50 199.4 K3

Module designation LED-0609/930

Colour temperature 3000 K

Colour rendering index CRI >90

Module luminous flux 4055 lm

Luminaire luminous flux 3500 lm

Luminaire luminous efficiency 92,1 lm/W

50 199.4 K4

Module designation LED-0609/940

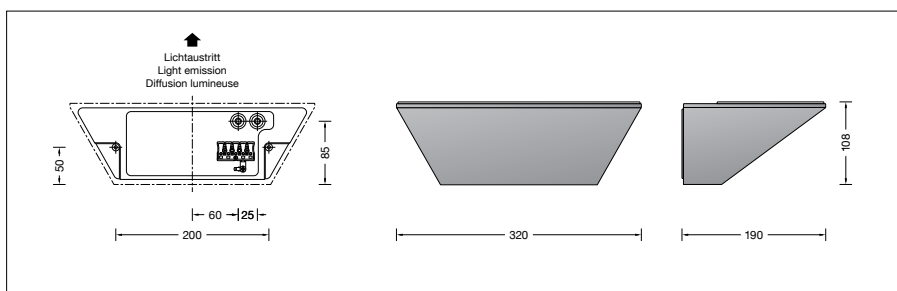
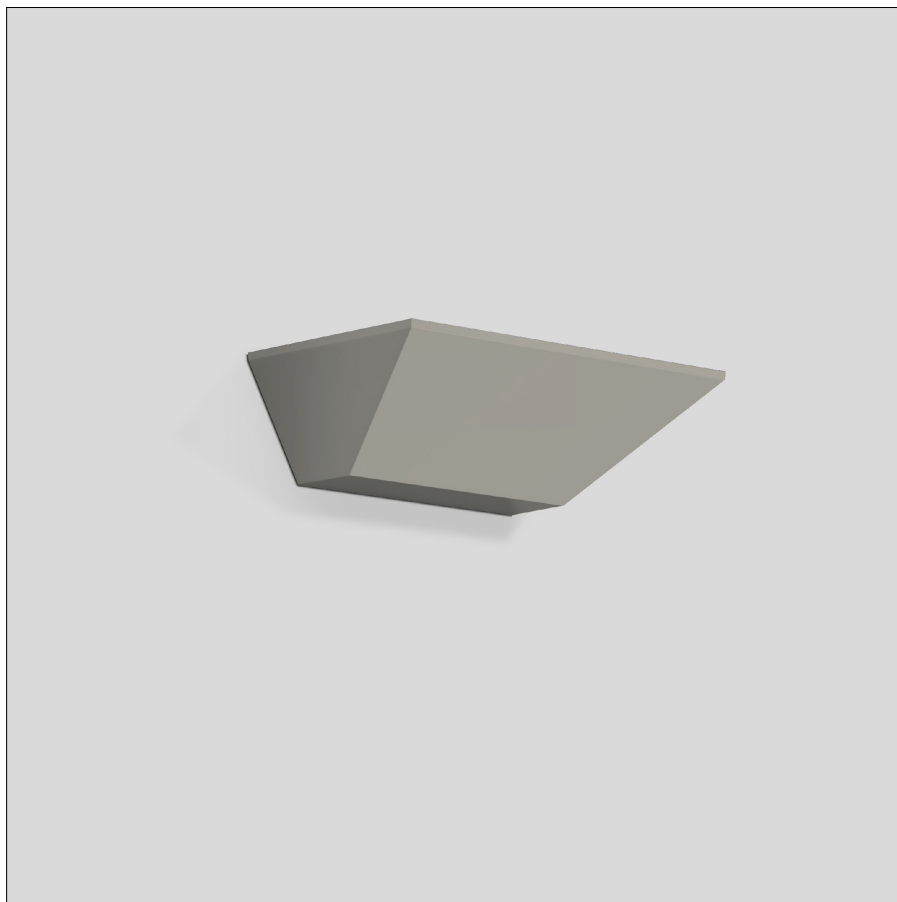
Colour temperature 4000 K

Colour rendering index CRI >90

Module luminous flux 4200 lm

Luminaire luminous flux 3625 lm

Luminaire luminous efficiency 95,4 lm/W



Service life of the LED

Ambient temperature $t_a = 25$ °C

– at 190,000h: L70B50

max. ambient temperature $t_a = 45$ °C

– at 62,000h: L70B50

Light technique

Luminaire data for the light planning program DIALux for outdoor lighting, street lighting and indoor lighting as well as luminaire data in EULUMDAT- and IES-format you will find on the BEGA web page www.bega.com.

Article No. 50 199.4

LED colour temperature optionally 3000K or 4000K

3000 K – Article number + **K3**

4000 K – Article number + **K4**

Finish options

- Enamel, white Code number **.1**
- Enamel, palladium Code number **.4**
- Enamel, velvet black Code number **.5**