

**BEGA****50 180.4**

Wall washer for indoor use



Project · Reference number

Date

## Product data sheet

### Application

LED wall washer · indoor luminaire with symmetrical light distribution for the illumination of wall surfaces with the mounting surface being the reflection surface.

The luminaire can be installed with the light distribution opening upwards or downwards.

### Product description

Die-cast aluminium and aluminium housing, finish enamel palladium

Matt safety glass

Reflector made of pure anodised aluminium

2 mounting holes  $\varnothing$  4.8 mm

Distance apart 128 mm

1 cable entry for mains supply cable

up to  $\varnothing$  10,5 mm max.  $3 \times 1,5^{\square}$

Connection terminal  $2,5^{\square}$

Earth conductor connection

LED power supply unit

220-240 V  $\sim$  0/50-60 Hz

DC 170-280 V

Safety class I

– Safety mark

– Conformity mark

Weight: 0.95 kg

### Inrush current

Inrush current: 27 A / 250  $\mu$ s

Maximum number of luminaires of this type per miniature circuit breaker:

B 10A: 17 luminaires

B 16A: 27 luminaires

C 10A: 28 luminaires

C 16A: 45 luminaires

### Lamp

Module connected wattage 10.5 W

Luminaire connected wattage 12.8 W

Rated temperature  $t_a = 25^{\circ}\text{C}$

Ambient temperature  $t_{a\text{max}} = 30^{\circ}\text{C}$

### 50 180.4 K3

Module designation LED-0810/930

Colour temperature 3000 K

Colour rendering index CRI > 90

Module luminous flux 1320 lm

Luminaire luminous flux\* 980 lm

Luminaire luminous efficiency\* 76,6 lm/W

### 50 180.4 K4

Module designation LED-0810/940

Colour temperature 4000 K

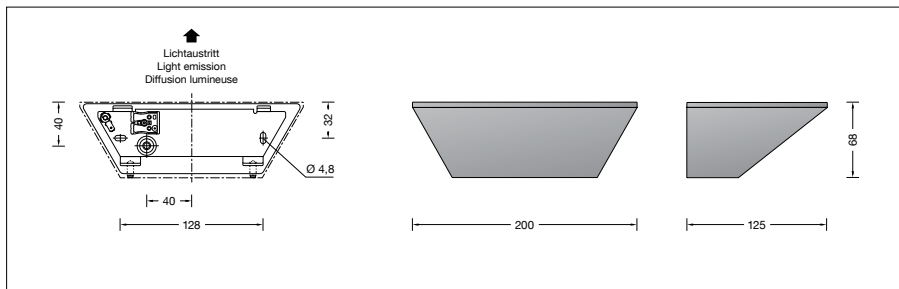
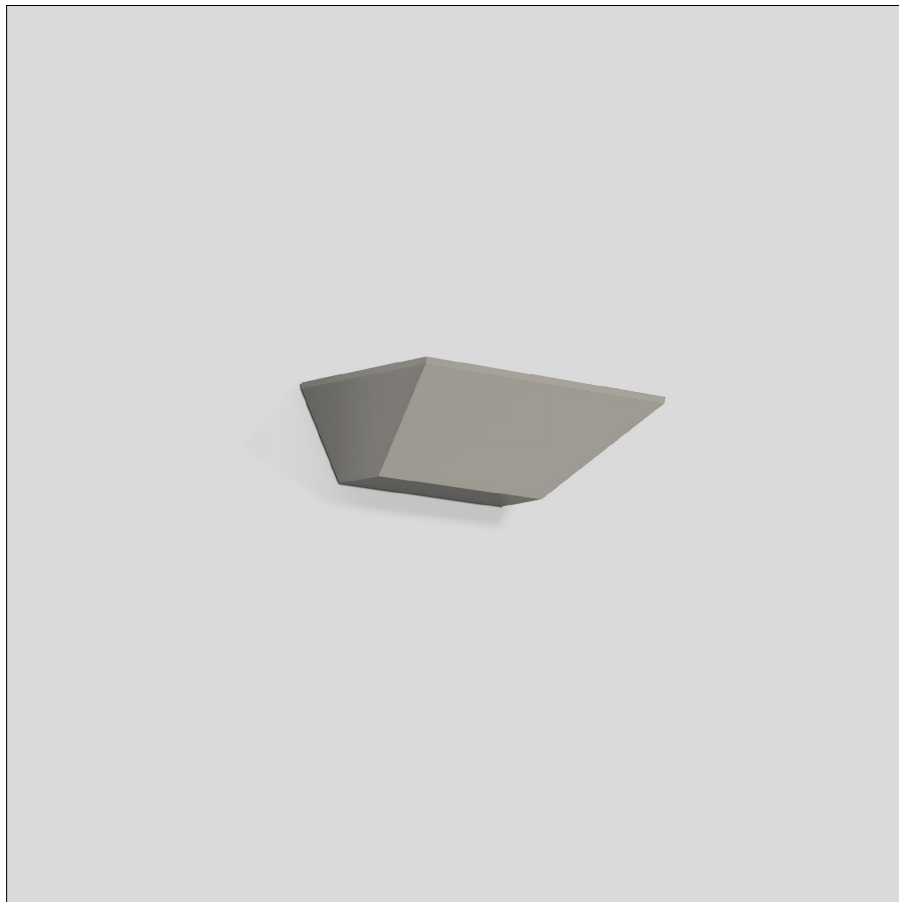
Colour rendering index CRI > 90

Module luminous flux 1365 lm

Luminaire luminous flux\* 1013 lm

Luminaire luminous efficiency\* 79,1 lm/W

\* preliminary data



### Service life of the LED

Ambient temperature  $t_a = 25^{\circ}\text{C}$

– at 197,000h: L70B50

max. ambient temperature  $t_a = 30^{\circ}\text{C}$

– at 147,000h: L70B50

### Light technique

Luminaire data for the light planning program DIALux for outdoor lighting, street lighting and indoor lighting as well as luminaire data in EULUMDAT- and IES-format you will find on the BEGA web page [www.bega.com](http://www.bega.com).

### Article No. 50 180.4

LED colour temperature optionally 3000 K or 4000 K

3000 K – Article number + **K3**

4000 K – Article number + **K4**

Finish options

- Enamel, white Code number **.1**
- Enamel, palladium Code number **.4**
- Enamel, velvet black Code number **.5**