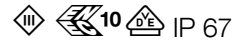


BEGA**33 291**

Recessed wall luminaire RGB



Project · Reference number

Date

Product data sheet

Application

Recessed luminaire with LEDs RGB for additive colour mix.

Maintenance-free luminaire with high protection class.

For recessed installation in walls for interior and exterior lighting applications.

Please note:

The luminaire is unsuitable for installing in ceilings.

A power supply unit and a controller are required to operate this luminaire – see accessories.

Product description

Recessed LED luminaire without power supply unit

Luminaire made of stainless steel

Steel grade no 1.4301

Safety glass, white

Reflector made of pure anodised aluminium

Required recessed opening 187 x 32 mm

Recessed depth 60 mm

Fixing is achieved by using two adjustable wedge-shaped claws

water-resistant connecting cable

05RN8-F 4 x 0,75[□]

Cable length 3 m

Safety class III ⚡

Protection class IP 67

Dust-tight and protection against temporary immersion

Impact strength IK08

Protection against mechanical

impacts < 5 joule

⚡10 ⚡ – Safety mark

CE – Conformity mark

Weight: 0.5 kg

Lamp

Module connected wattage

3 W

Luminaire connected wattage

4.1 W

Rated temperature

$t_a = 25\text{ °C}$

Ambient temperature

$t_{a\text{ max}} = 35\text{ °C}$

Service life criteria

50 000 h / L₇₀

Module designation

LED-0160/RGB

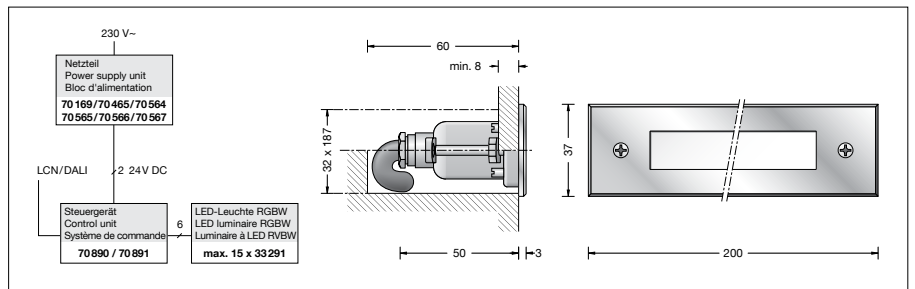
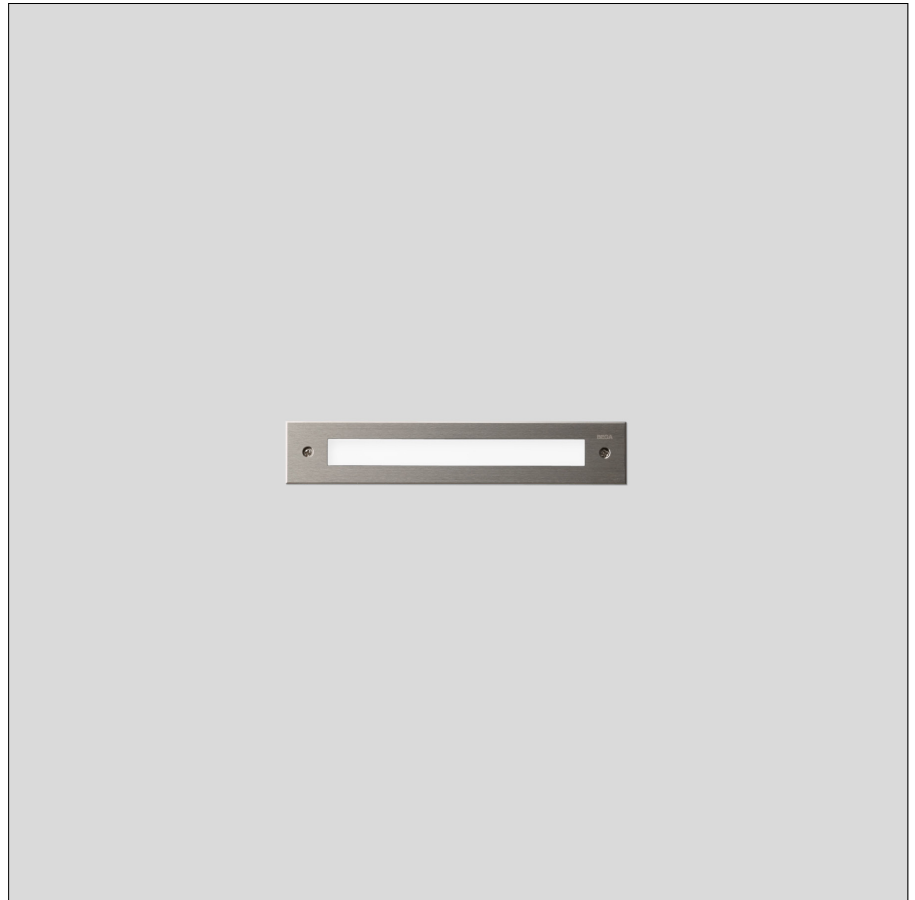
Luminaire luminous flux*

73 lm

Luminaire luminous efficiency*

17,8 lm/W

* preliminary data



Accessories

BEGA Safety transformers according to DIN EN 61558/VDE 0570, part 2-6

70 564 Power supply unit for 0 - 15 W

70 465 Power supply unit for 0 - 25 W

70 565 Power supply unit for 0 - 35 W

70 566 Power supply unit for 0 - 50 W

70 567 Power supply unit for 0 - 75 W

70 169 Power supply unit for 0 - 150 W

70 890 Control unit LCN

70 891 Control unit DALI

10 634 Installation housing

For the accessories a separate instructions for use can be provided upon request.