

BEGA**33 165**

Recessed luminaire



Project · Reference number



Date

Product data sheet

Application

Unshielded LED-luminaire for installation in walls or stairs.
Installation possible in horizontal or vertical burning position.

Product description

Luminaire made of aluminium alloy, aluminium and stainless steel
Safety glass, white
Silicone gasket
Reflector made of pure anodised aluminium
Fixing is achieved by using two adjustable wedge-shaped claws
Required recessed opening 245 x 60 mm
Recessed depth 70 mm
2 cable entries for through-wiring of mains supply cable \varnothing 7-10.5 mm
Connection terminal 2.5²
Earth conductor connection
LED power supply unit
220-240 V \sim 0/50-60 Hz
DC 198-264 V
Safety class I
Protection class IP 65
Dust-tight and protection against water jets
Impact strength IK06
Protection against mechanical impacts < 1 joule
 – Safety mark
 – Conformity mark
Weight: 0.8 kg

Inrush current

Inrush current: 27 A / 250 μ s
Maximum number of luminaires of this type per miniature circuit breaker:
B 10A: 17 luminaires
B 16A: 27 luminaires
C 10A: 28 luminaires
C 16A: 45 luminaires

Lamp

| | |
|--|--------------------------------------|
| Module connected wattage | 5.6 W |
| Luminaire connected wattage | 7.6 W |
| Rated temperature | $t_a = 25^\circ\text{C}$ |
| Ambient temperature | $t_{a\text{max}} = 40^\circ\text{C}$ |
| When installed in heat-insulating material | $t_{a\text{max}} = 30^\circ\text{C}$ |

On request we can offer you modifications for environments with higher temperatures as a customized product.

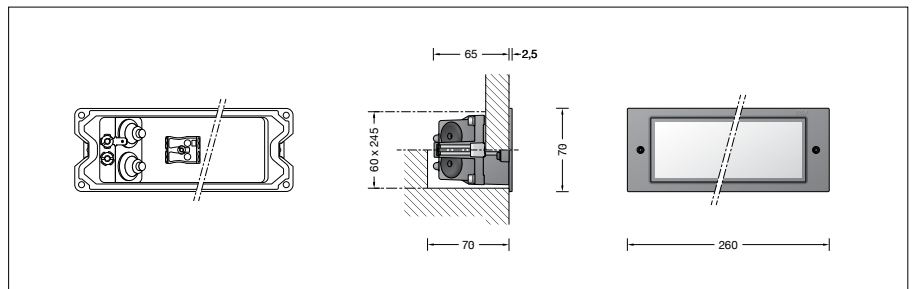
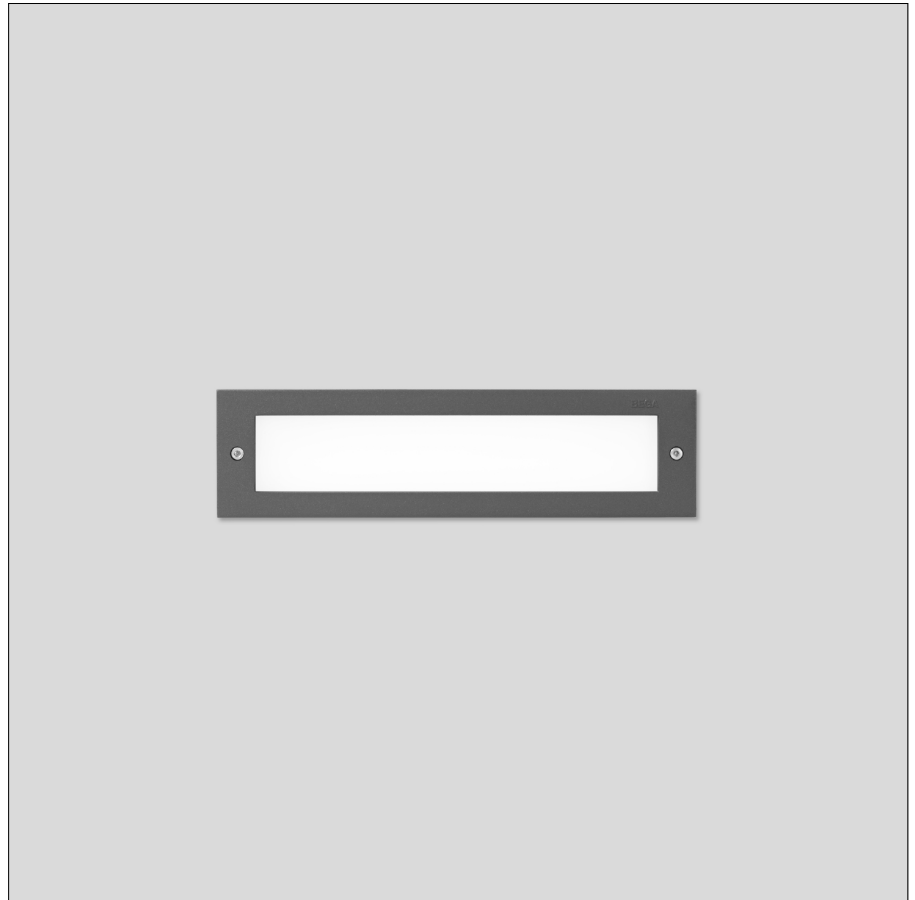
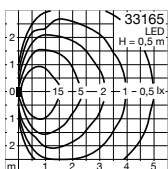
33 165 K3

| | |
|-------------------------------|--------------|
| Module designation | LED-0643/830 |
| Colour temperature | 3000 K |
| Colour rendering index | CRI > 80 |
| Module luminous flux | 955 lm |
| Luminaire luminous flux | 516 lm |
| Luminaire luminous efficiency | 67,9 lm/W |

33 165 K4

| | |
|-------------------------------|--------------|
| Module designation | LED-0643/840 |
| Colour temperature | 4000 K |
| Colour rendering index | CRI > 80 |
| Module luminous flux | 1005 lm |
| Luminaire luminous flux | 543 lm |
| Luminaire luminous efficiency | 71,4 lm/W |

Light distribution



Service life · Ambient temperature

Ambient temperature $t_a = 25^\circ\text{C}$
LED psu: > 50,000h
LED module: 115,000h (L80 B50)
100,000h (L80 B50)

Ambient temperature $t_a = 40^\circ\text{C}$
LED psu: 50,000h
LED module: 105,000h (L80 B50)
100,000h (L80 B50)

Article No. 33 165

LED colour temperature optionally 3000K or 4000K
3000 K – Article number + **K3**
4000 K – Article number + **K4**

Colour graphite or silver
graphite – article number
silver – article number + **A**

Accessories

10 425 Installation housing
13 520 Installation housing for installation in insulated façades (EWIS)
10 025 Plaster frame
13 504 Plaster frame flush

A separate instructions for use can be provided upon request.