

BEGA**33 109**

Recessed luminaire



Project · Reference number

Date

Product data sheet

Application

Unshielded LED-luminaire for installation in walls or stairs.
Installation possible in horizontal or vertical burning position.

Product description

Luminaire made of aluminium alloy, aluminium and stainless steel
Safety glass, white
Silicone gasket
Reflector made of pure anodised aluminium
Fixing is achieved by using two adjustable wedge-shaped claws
Required recessed opening 155 x 60 mm
Recessed depth 70 mm
2 cable entries for through-wiring of mains supply cable \varnothing 7-10.5 mm
Connection terminal 2.5²
Earth conductor connection
LED power supply unit
220-240 V \sim 0/50-60 Hz
DC 176-264 V
Safety class I
Protection class IP 65
Dust-tight and protection against water jets
Impact strength IK05
Protection against mechanical impacts < 0.7 joule
 – Safety mark
 – Conformity mark
Weight: 0.55 kg

Inrush current

Inrush current: 7 A / 112 μ s
Maximum number of luminaires of this type per miniature circuit breaker:
B 10A: 38 luminaires
B 16A: 61 luminaires
C 10A: 64 luminaires
C 16A: 102 luminaires

Lamp

Module connected wattage	4 W
Luminaire connected wattage	5.1 W
Rated temperature	$t_a = 25$ °C
Ambient temperature	$t_{a \max} = 40$ °C
When installed in heat-insulating material	$t_{a \max} = 35$ °C

On request we can offer you modifications for environments with higher temperatures as a customized product.

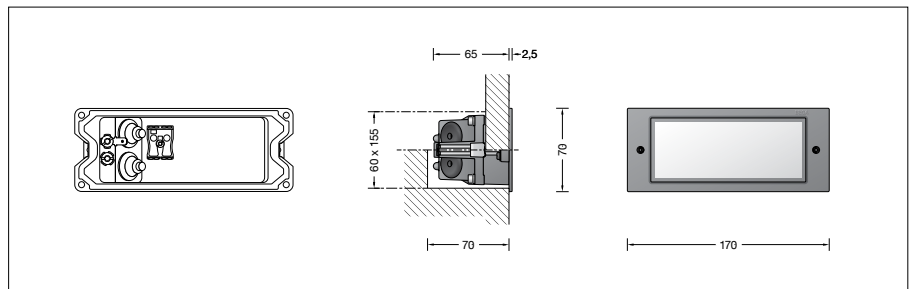
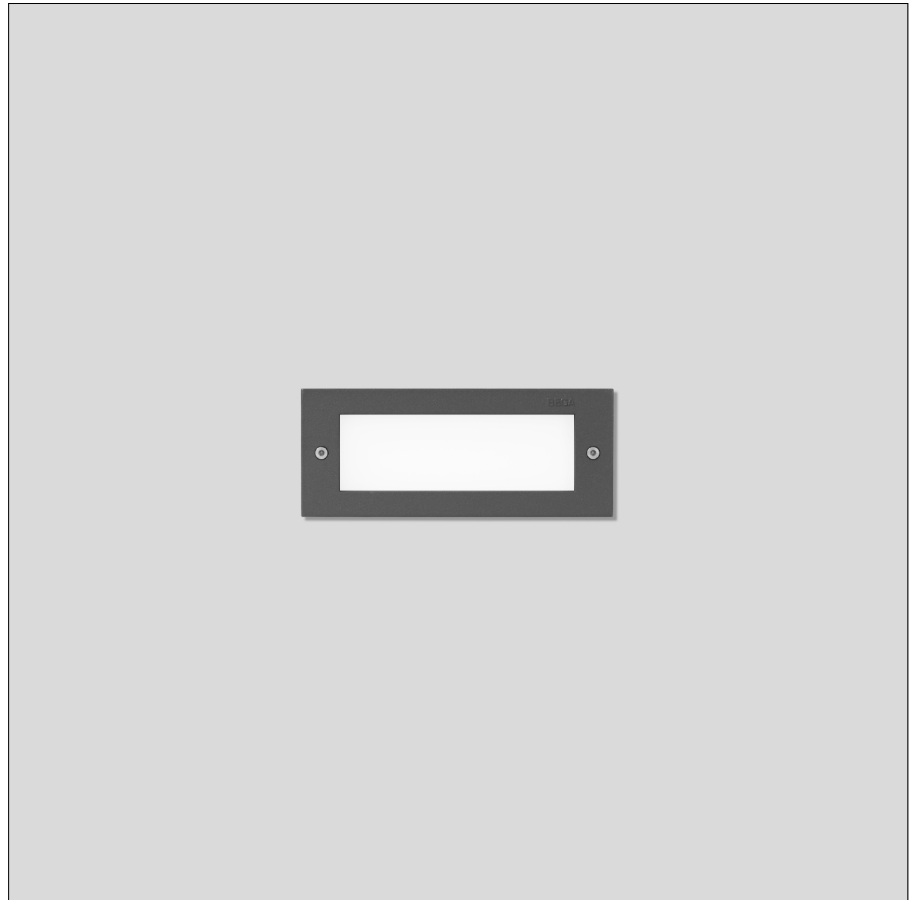
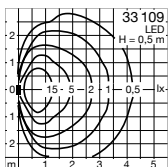
33 109 K3

Module designation	LED-0641/830
Colour temperature	3000 K
Colour rendering index	CRI > 80
Module luminous flux	675 lm
Luminaire luminous flux	331 lm
Luminaire luminous efficiency	64,9 lm/W

33 109 K4

Module designation	LED-0641/840
Colour temperature	4000 K
Colour rendering index	CRI > 80
Module luminous flux	710 lm
Luminaire luminous flux	348 lm
Luminaire luminous efficiency	68,2 lm/W

Light distribution



Service life · Ambient temperature

Ambient temperature $t_a = 25$ °C
LED psu: > 50,000 h
LED module: 115,000 h (L 80 B 50)
100,000 h (L 80 B 50)

Ambient temperature $t_a = 40$ °C
LED psu: 50,000 h
LED module: 105,000 h (L 80 B 50)
100,000 h (L 80 B 50)

Light technique

Luminaire data for the light planning program
DIALux for outdoor lighting, street lighting and indoor lighting as well as luminaire data in EULUMDAT- and IES-format you will find on the BEGA web page www.bega.com.

Article No. 33 109

LED colour temperature optionally 3000 K or 4000 K
3000 K – Article number + **K3**
4000 K – Article number + **K4**

Colour graphite or silver
graphite – article number
silver – article number + **A**

Accessories

10 424 Installation housing
13 519 Installation housing for installation in insulated façades (EWIS)
10 024 Plaster frame
13 503 Plaster frame flush

For the accessories a separate instructions for use can be provided upon request.