

BEGA**33 107**

Recessed luminaire



Project · Reference number

Date

Product data sheet

Application

Recessed LED location luminaire for installation in walls or stairs.
Installation possible in horizontal or vertical burning position.

Product description

Luminaire made of aluminium alloy, aluminium and stainless steel
Safety glass, white
Silicone gasket
Reflector made of pure anodised aluminium
Fixing is achieved by using two adjustable wedge-shaped claws
Required recessed opening 155 x 60 mm
Recessed depth 70 mm
2 cable entries for through-wiring of mains supply cable \varnothing 7-10.5 mm
Connection terminal 2.5²
Earth conductor connection
LED power supply unit
220-240 V \sim 0/50-60 Hz
DC 176-264 V
Safety class I
Protection class IP 65
Dust-tight and protection against water jets
Impact strength IK06
Protection against mechanical impacts < 1 joule
 – Safety mark
 – Conformity mark
Weight: 0.55 kg

Inrush current

Inrush current: 6 A / 102 μ s
Maximum number of luminaires of this type per miniature circuit breaker:
B 10A: 60 luminaires
B 16A: 96 luminaires
C 10A: 100 luminaires
C 16A: 161 luminaires

Lamp

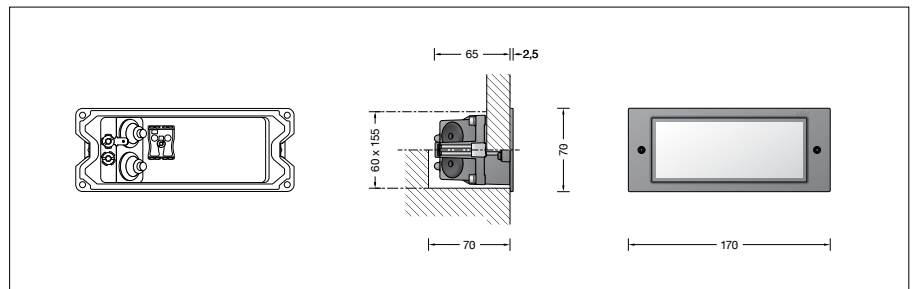
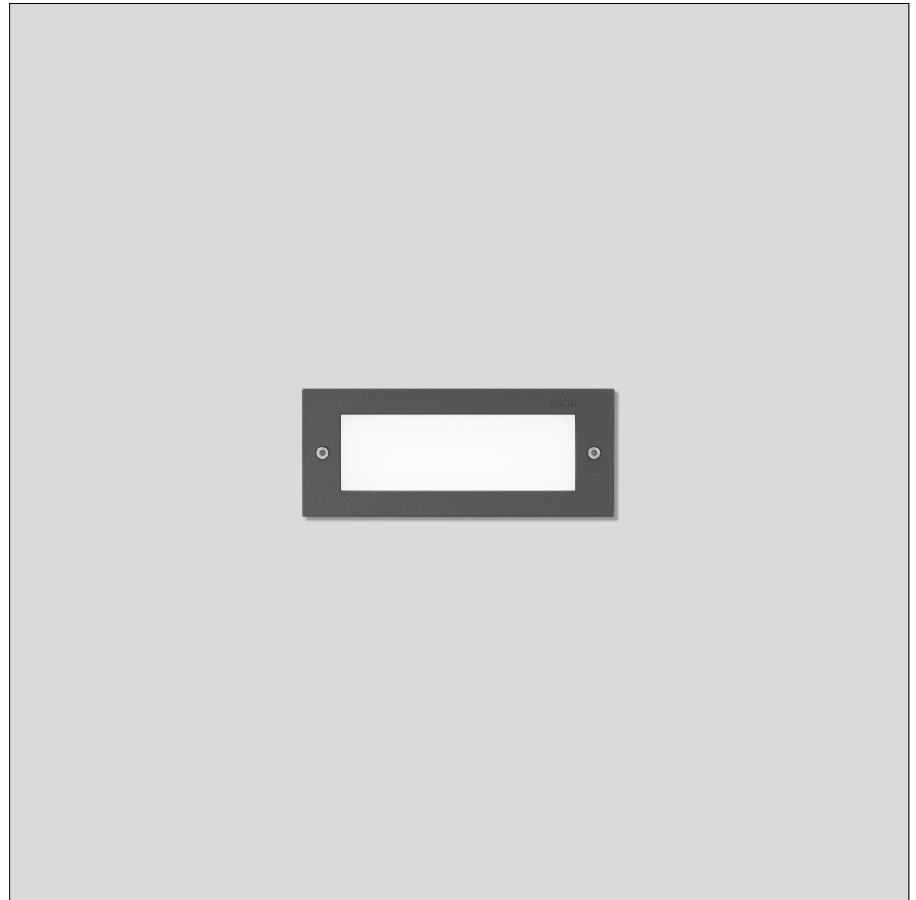
Module connected wattage	1.9 W
Luminaire connected wattage	2.5 W
Rated temperature	$t_a = 25^\circ\text{C}$
Ambient temperature	$t_{a\text{max}} = 55^\circ\text{C}$
When installed in heat-insulating material	$t_{a\text{max}} = 50^\circ\text{C}$

33 107 K3

Module designation	LED-0640/830
Colour temperature	3000 K
Colour rendering index	CRI > 80
Module luminous flux	335 lm
Luminaire luminous flux	170 lm
Luminaire luminous efficiency	68 lm/W

33 107 K4

Module designation	LED-0640/840
Colour temperature	4000 K
Colour rendering index	CRI > 80
Module luminous flux	355 lm
Luminaire luminous flux	180 lm
Luminaire luminous efficiency	72 lm/W



Service life · Ambient temperature

Ambient temperature $t_a = 25^\circ\text{C}$
LED psu: > 50,000 h
LED module: 130,000 h (L 80 B 50)
100,000 h (L 80 B 50)

Ambient temperature $t_a = 55^\circ\text{C}$
LED psu: 50,000 h
LED module: 110,000 h (L 80 B 50)
100,000 h (L 80 B 50)

Article No. 33 107

LED colour temperature optionally 3000 K or 4000 K
3000 K – Article number + **K3**
4000 K – Article number + **K4**

Colour graphite or silver
graphite – article number
silver – article number + **A**

Accessories

10 424 Installation housing
13 519 Installation housing for installation in insulated façades (EWIS)

10 024 Plaster frame
13 503 Plaster frame flush

A separate instructions for use can be provided upon request.

Light distribution

