

BEGA**12 278.4**

Wall luminaire for indoor use



Project · Reference number

Date

Product data sheet

Application

Shielded wall luminaire · indoor luminaire for many lighting tasks in interior applications. The light emits upwards and downwards.

Product description

Aluminium alloy housing,
finish enamel palladium
Crystal glass, inside white
2 elongated fixing holes
Width 4,5 mm · 276 mm spacing
2 cable entries for through-wiring for mains cable up to \varnothing 10,5 mm max. $3 \times 1,5^{\square}$
Connection terminal $2,5^{\square}$
Earth conductor connection
LED power supply unit
220-240 V \sim 0/50-60 Hz
DC 170-280 V
Safety class I
 – Safety mark
CE – Conformity mark
Weight: 1.6 kg

Inrush current

Inrush current: 27 A / 250 μ s
Maximum number of luminaires of this type per miniature circuit breaker:
B10A: 17 luminaires
B16A: 27 luminaires
C10A: 28 luminaires
C16A: 46 luminaires

Lamp

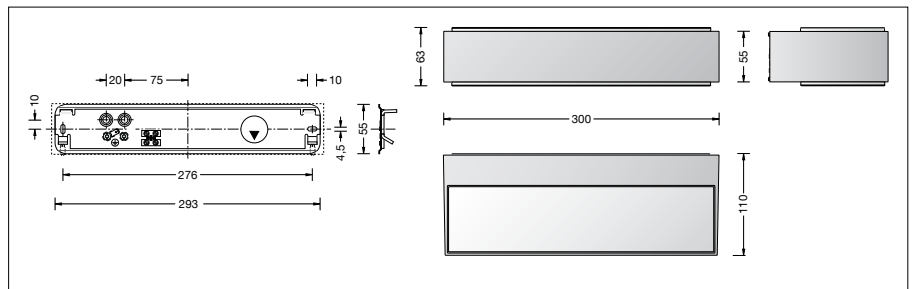
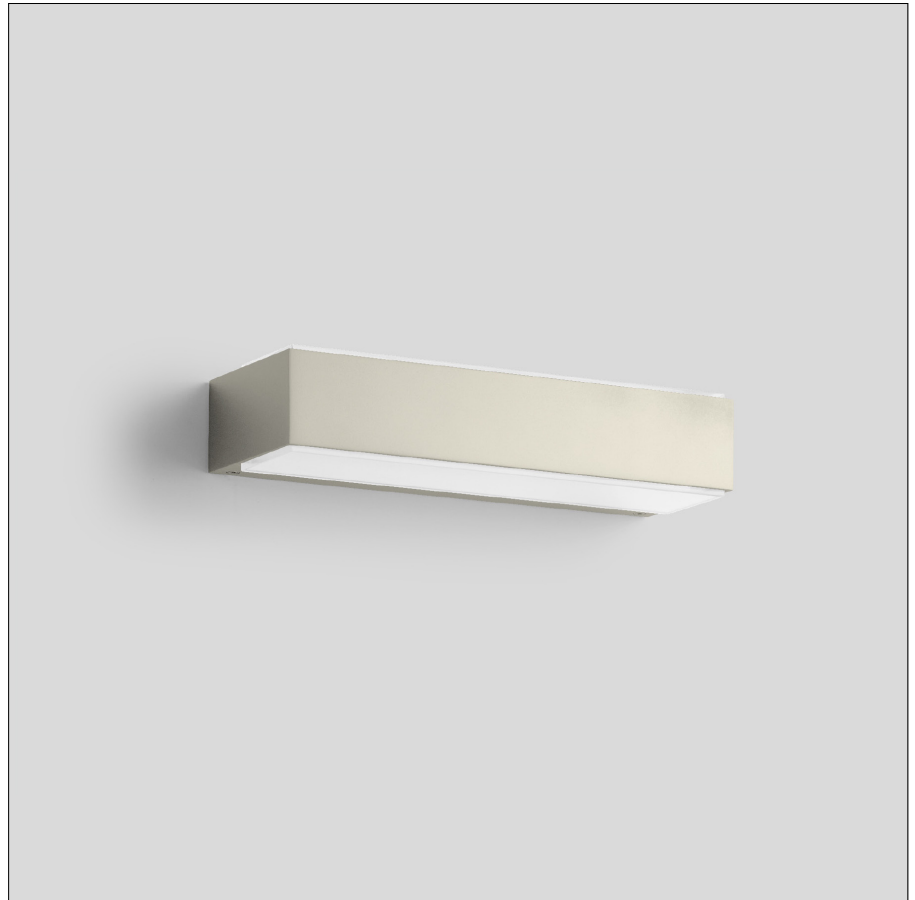
Module connected wattage 12.6 W
Luminaire connected wattage 15.7 W
Rated temperature $t_a = 25^{\circ}\text{C}$
Ambient temperature $t_{a\text{max}} = 40^{\circ}\text{C}$

12 278.4 K3

Module designation LED-0599/930
Colour temperature 3000 K
Colour rendering index CRI > 90
Module luminous flux 1580 lm
Luminaire luminous flux 893 lm
Luminaire luminous efficiency 56,9 lm/W

12 278.4 K4

Module designation LED-0599/940
Colour temperature 4000 K
Colour rendering index CRI > 90
Module luminous flux 1640 lm
Luminaire luminous flux 927 lm
Luminaire luminous efficiency 59 lm/W



Service life of the LED

Ambient temperature $t_a = 25^{\circ}\text{C}$
– at 268,000h: L70B50

max. ambient temperature $t_a = 40^{\circ}\text{C}$
– at 110,000h: L70B50

Light technique

Luminaire data for the light planning program DIALux for outdoor lighting, street lighting and indoor lighting as well as luminaire data in EULUMDAT- and IES-format you will find on the BEGA web page www.bega.com.

Article No. 12 278.4

LED colour temperature optionally 3000 K or 4000 K
3000 K – Article number + **K3**
4000 K – Article number + **K4**

Finish options

- Enamel, white
- Enamel, palladium

Code number **.1**
Code number **.4**