

**BEGA****12 277.1**

Wall luminaire for indoor use



Project · Reference number



Date

## Product data sheet

### Application

Shielded wall luminaire · indoor luminaire for many lighting tasks in interior applications. The light emits upwards and downwards.

### Product description

Aluminium alloy housing, finish white enamel  
 Crystal glass, inside white  
 2 elongated fixing holes  
 Width 4,5 mm · 176 mm spacing  
 2 cable entries for through-wiring for mains cable up to  $\varnothing$  10,5 mm max.  $3 \times 1,5^{\square}$   
 Connection terminal  $2,5^{\square}$   
 Earth conductor connection  
 LED power supply unit  
 220-240 V  $\sim$  0/50-60 Hz  
 DC 170-280 V  
 Safety class I  
 – Safety mark  
 – Conformity mark  
 Weight: 1.1 kg

### Inrush current

Inrush current: 27 A / 250  $\mu$ s  
 Maximum number of luminaires of this type per miniature circuit breaker:  
 B10A: 17 luminaires  
 B16A: 27 luminaires  
 C10A: 28 luminaires  
 C16A: 45 luminaires

### Lamp

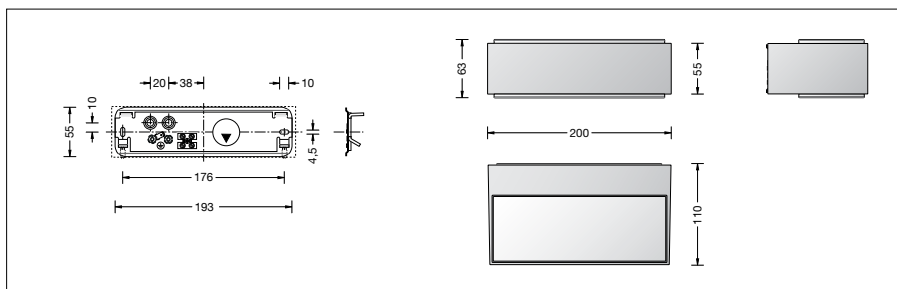
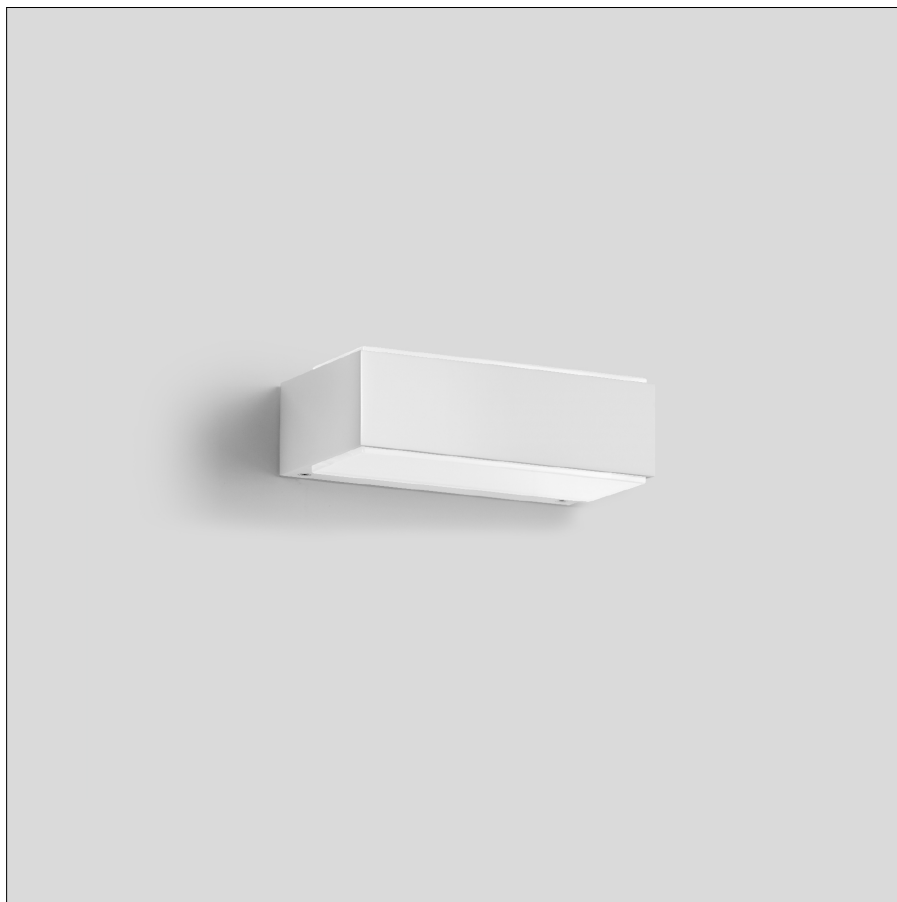
Module connected wattage 8,4 W  
 Luminaire connected wattage 10,7 W  
 Rated temperature  $t_a = 25^{\circ}\text{C}$   
 Ambient temperature  $t_{a\text{max}} = 40^{\circ}\text{C}$

### 12 277.1 K3

Module designation LED-0598/930  
 Colour temperature 3000 K  
 Colour rendering index CRI > 90  
 Module luminous flux 1055 lm  
 Luminaire luminous flux 590 lm  
 Luminaire luminous efficiency 55,1 lm/W

### 12 277.1 K4

Module designation LED-0598/940  
 Colour temperature 4000 K  
 Colour rendering index CRI > 90  
 Module luminous flux 1095 lm  
 Luminaire luminous flux 612 lm  
 Luminaire luminous efficiency 57,2 lm/W



### Service life of the LED

Ambient temperature  $t_a = 25^{\circ}\text{C}$   
 – at 132,000h: L70B50

max. ambient temperature  $t_a = 40^{\circ}\text{C}$   
 – at 57,000h: L70B50

### Light technique

Luminaire data for the light planning program DIALux for outdoor lighting, street lighting and indoor lighting as well as luminaire data in EULUMDAT- and IES-format you will find on the BEGA web page [www.bega.com](http://www.bega.com).

### Article No. 12 277.1

LED colour temperature optionally 3000 K or 4000 K  
 3000 K – Article number + **K3**  
 4000 K – Article number + **K4**

### Finish options

- Enamel, white
- Enamel, palladium

Code number **.1**  
 Code number **.4**