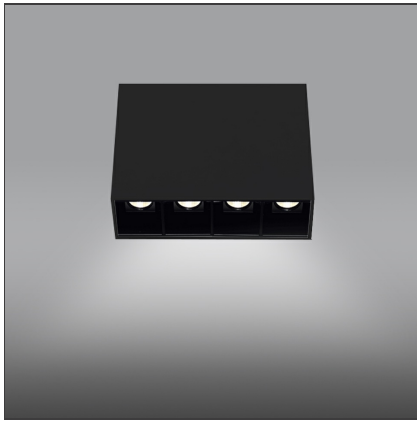


Sharp SMD - 11W 54° 3000K Black



IP20  

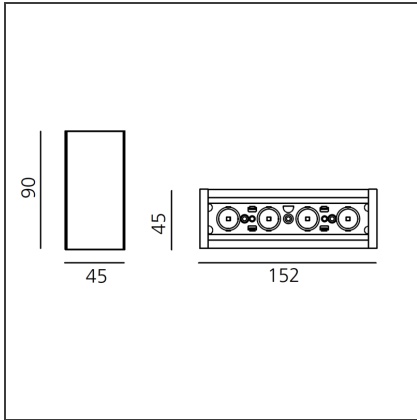
DESIGN BY

Carlotta de Bevilacqua

DESCRIPTION

High-efficiency patented optical system that combines polynomial perspective to an element that shields geometrically the angle of vision of the beam. High uniformity of illumination and full emission control. Complete absence of possible light flaws as stains and multi-shadows. Recessed depth 60 mm. Suitable for a ceiling of 1 to 25 mm. Available in trim versions, trimless and SMD.

TECHNICAL DRAWINGS



FEATURES

Article Code:	AF41504	Series:	Indoor
Colour:	Black		
Installation:	Ceiling		
Environment:	Indoor		

DIMENSIONS

Length:	cm 15.2
Width:	cm 4,5
Height:	cm 9

INCLUDED SOURCES

Category:	LED	Color temperature (K):	3000K
Number:	1		
Watt:	11W		
Type:	0		
Class:	A		

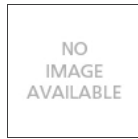
LUMINAIRE

Watt:	11W	Delivered lumens output (lm):	779lm
		CCT:	3000K
		CRI:	>90

Notes

Screen and CV SELV driver supplied separately.

ACCESSORIES



Driver CV 30W
24Vdc Selv - 220-
240 Vac -
153x41x32
(LxWxH) - up to
25W -
Undimmable
DV1032



Screen 4x White
AF95201



Screen 4x Black
AF95204



Driver CV 75W
24Vdc Selv - 220-
240 Vac -
180x52x30
(LxWxH) - up to
65W -
Undimmable
DV1009



Sharping wall
grazer lens Kit
(4pcs) - 26°x70°
elliptical lenses kit.
It has to be used
on top of S 20°
reflectors to get
an elliptical beam
(greter axis along
the module
lenght). It contains
4 lenses.
AF06000



Driver CV 120W
24Vdc Selv - 220-
240 Vac -
153x41x32
(LxWxH) - up to
100W -
Undimmable
DV1033