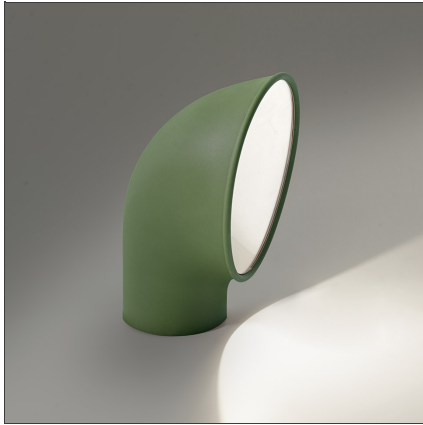


## Piroscafo Green



IP65 

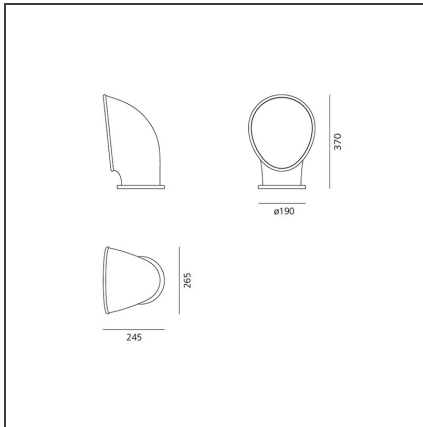
### DESIGN BY

Ernesto Gismondi

### DESCRIPTION

Lighting appliance for ground fixing with radial bidirectional light emission, using monochrome LED light sources. The appliance is made up of a body and a fixing base of EN-AB 47100 die-cast aluminium finished with a 3-stage outdoor treatment: nanotechnologies, anti-oxidizing primer, polyester painting. Equipped with a furukawa reflector Shiny shock-resistant anti-UV polycarbonate screen AISI 316 fixing screws and silicon seals. Sealing degree IP65. Class I provided with cable and IP67 connector for connection to the mains. Supports cables with 7 to 12 mm diameters. Technical specifications comply with the EN60598-1 norm. CE registration

### TECHNICAL DRAWINGS



### FEATURES

<b>Article Code:</b>	T081920	<b>Material:</b>	Aluminum, tempered glass
<b>Colour:</b>	Green	<b>Series:</b>	Outdoor
<b>Installation:</b>	Floor		

### DIMENSIONS

<b>Length:</b>	cm 19.8
<b>Width:</b>	cm 17
<b>Height:</b>	cm 27.5

### INCLUDED SOURCES

<b>Category:</b>	LED	<b>Color temperature (K):</b>	3000K
<b>Number:</b>	1		
<b>Watt:</b>	14W		
<b>Type:</b>	0		
<b>Class:</b>	A		

### LUMINAIRE

<b>Watt:</b>	14W	<b>Delivered lumens output (lm):</b>	1143lm
		<b>CCT:</b>	3000K
		<b>CRI:</b>	80