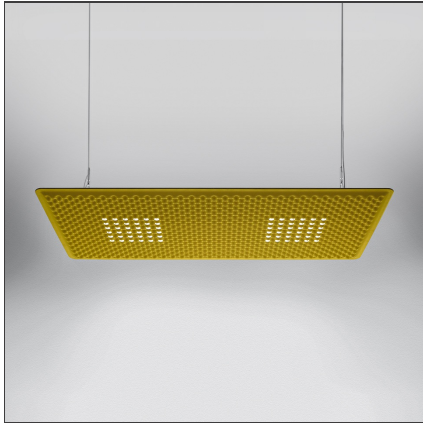


Eggboard Matrix Direct + indirect 1600x800 Dali Dimmable 4000K



IP20  Dimmerable: 

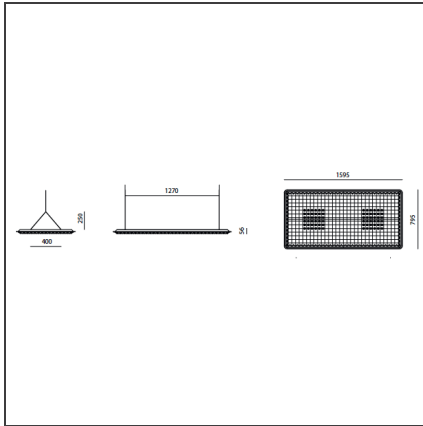
DESIGN BY

Progetto CMR - Giacobone & Roj

DESCRIPTION

Suspension appliance with sound-absorbing properties ensured by a peculiar sinusoidal cross-section design of the lower surface and the use of a sound-absorbing material. Acoustic efficiency is ensured within a limited space by positioning at approximately one metre above the head of the speaker and listener. Direct emission: a board with a high number of low-voltage LEDs with rotosymmetrical reflectors ensures maximum lighting comfort. Colour temperature 3000K or 4000 K. Complies with the norms on office activities that involve the use of video-terminals (UGR)

TECHNICAL DRAWINGS



FEATURES

Article Code:	M3101N51	Series:	Indoor
Colour:	Green		
Installation:	Suspension		

DIMENSIONS

Length:	cm 159.5
Width:	cm 79.5
Height:	cm 25
Weight:	kg 17.7

INCLUDED SOURCES

Category:	LED	Color temperature (K):	4000K
Number:	1	Color Tolerance:	MacAdam 4SDCM
Watt:	65W	CRI:	=80(min.)
Delivered lumens output (lm):	8876lm	Efficacy:	131lm/W
Type:	0	Service Life:	L70(6K)>50000h
Class:	A		

LUMINAIRE

Watt:	75W	Delivered lumens output (lm):	6861lm
		CCT:	4000K
		Efficiency:	74%
		Efficacy:	91.47lm/W
		CRI:	80