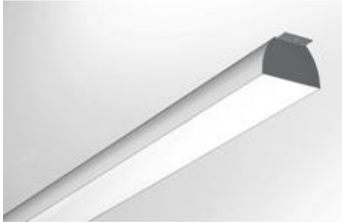


PRODUCT DATA SHEET

RA System - Direct/Indirect Diffuser Optic - T16 28W



DESIGN BY :

Foster & Partners

MATERIALS :

Extruded Aluminium

DESCRIPTION :

Multifunctional modular system using T16 fluorescent lamps. The system comprises of a pre-cabled extruded aluminium structure with grey paint finish, various interchangeable optics and panels for auxiliary services. The structure comes in 2 different widths (400mm or 600mm) and lengths (2080mm or 2380mm) depending on the lamps number and wattage. Structure available with or without a three-phase track suitable for spotlights with adapter, for LCD screens, etc. The wide range of interchangeable optics and light emission options meet the needs of many different applications like in office environments, premises equipped with computer terminals, waiting rooms, halls, restaurants, airports, exhibition halls, museums, commercial premises, etc. RA SYSTEM may be equipped with safety systems (smoke detectors, independent units), detector units (movement or daylight sensors) and with auxiliary services (audio, video, thermostats or signal panels). Such devices enhance its functional nature and ensure intelligent and rational use of the system. RA SYSTEM can be installed as a pendant, as a ceiling light or recessed into plasterboard false ceilings. Intermediate connectors, end pieces or pendant systems are to be ordered separately. Electronic ballast or DALI dimmable ballast. An optional cable duct can be installed in the upper part of the structure. Complies with standard EN60598-1 and other specific standards. Not only does RA SYSTEM represent a platform capable of accommodating different lighting systems, it also acts as a support for other systems or services related to the working environment. RA SPECIAL PROJECTS provides a range of accessories and integrated systems, whose purpose is to improve the quality of life of any interior environment by satisfying all of the end user's specific needs. In virtue of its close collaboration with first-rate suppliers, ARTEMIDE is able to offer solutions and equipment suitable for all types of projects.

Light emission

Indirect Asymmetrical

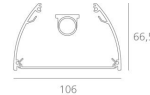


TECHNICAL DATA SHEET

Features

Product name:	RA System - Direct/Indirect Diffuser Optic - T16 28W
Article Code:	L566600
Colour:	Metal Grey
Material:	Extruded Aluminium
Series:	Architectural
Environment:	Indoor
Area contract:	

Dimensions



OPTICS

Emission:	Indirect Asymmetrical
-----------	-----------------------

DIMENSIONS

Width:	(cm) 10.6
Height:	(cm) 6.65
Cutout shape:	
Weight:	2

LAMPS NOT INCLUDED

Category:	FLUO
Number:	1
Lbs:	T16
Watt:	28
Socket:	G5
Type:	FDH-28
Luminous Flux (lm):	2600
Colour Rendering:	85
Colour temperature (K):	3000
Duration (h):	20000

LAMP



ELECTRICAL

Starter:	Electronic
Voltage:	220V-240V