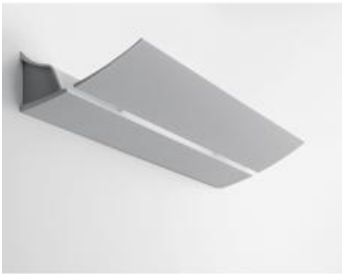


## PRODUCT DATA SHEET

### Kanji 900 - Fluo TC-LEL 80W



**DESIGN BY :**

Eric Solè

**MATERIALS :**

Extruded Aluminium

**DESCRIPTION :**

A range of wall lamps with indirect lighting using 230/240V halogen and fluorescent lamps. Extruded aluminium body with white paint finish. Asymmetric light distribution. 3 length options: 280mm, 900mm and 1600mm. Electronic control gear. Optional emergency lighting for the TC-LEL fluorescent. Complies with standard EN60598-1 and other specific standards.

**Light emission**

Indirect Asymmetrical

IP20  

### TECHNICAL DATA SHEET

**Features**

Product name:	Kanji 900 - Fluo TC-LEL 80W
Article Code:	M026720
Colour:	White
Material:	Extruded Aluminium
Series:	Architectural
Environment:	Indoor
Area contract:	

**OPTICS**

Emission:	Indirect Asymmetrical
-----------	-----------------------

**DIMENSIONS**

Length:	(cm) 90
Width:	(cm) 17.1
Height:	(cm) 8
Cutout shape:	
Weight:	4.4
Glow Wire Test:	960 °

**LAMPS NOT INCLUDED**

Category:	FLUO
Number:	1
Lbs:	TC-LEL
Watt:	80
Socket:	2G11
ILCOS:	FSD-80
Luminous Flux (lm):	6000
Colour Rendering:	85
Colour temperature (K):	3000
Duration (h):	13000

**Dimensions**



**LAMP**

IP20  

**ELECTRICAL**

Starter:	Electronic
Voltage:	220V-240V