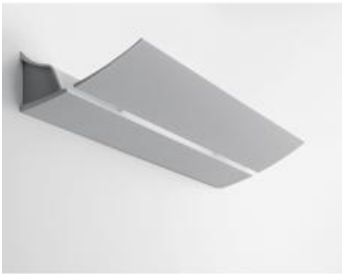


PRODUCT DATA SHEET

Kanji 900 - Fluo TC-LEL 55W + emergency 1h



DESIGN BY :

Eric Solè

MATERIALS :

Extruded Aluminium

DESCRIPTION :

A range of wall lamps with indirect lighting using 230/240V halogen and fluorescent lamps. Extruded aluminium body with white paint finish. Asymmetric light distribution. 3 length options: 280mm, 900mm and 1600mm. Electronic control gear. Optional emergency lighting for the TC-LEL fluorescent. Complies with standard EN60598-1 and other specific standards.

Light emission

Indirect Asymmetrical

IP20  

TECHNICAL DATA SHEET

Features

Product name:	Kanji 900 - Fluo TC-LEL 55W + emergency 1h
Article Code:	M026627
Colour:	White
Material:	Extruded Aluminium
Series:	Architectural
Environment:	Indoor
Area contract:	

OPTICS

Emission:	Indirect Asymmetrical
-----------	-----------------------

DIMENSIONS

Length:	(cm) 90
Width:	(cm) 17.1
Height:	(cm) 8
Cutout shape:	
Weight:	5
Glow Wire Test:	960 °

LAMPS NOT INCLUDED

Category:	FLUO
Number:	1
Lbs:	TC-LEL
Watt:	55
Socket:	2G11
Type:	FSDH
Luminous Flux (lm):	4800
Colour Rendering:	85
Colour temperature (K):	3000
Duration (h):	12000

Dimensions



LAMP

IP20  

ELECTRICAL

Starter:	Electronic
Emergency availability:	Integrated
Emergency duration:	1 hour
Voltage:	220V-240V