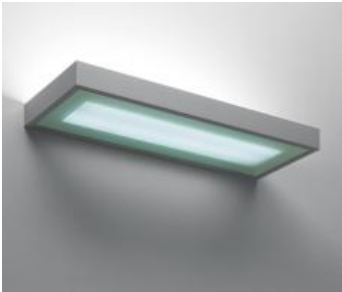


## PRODUCT DATA SHEET

### Kalifa Wall TC-LEL 2x55W + emergency - White



#### DESIGN BY :

Ernesto Gismondi

#### MATERIALS :

Extruded Aluminium

#### DESCRIPTION :

A range of wall lamps with direct-indirect lighting using 1x24W and 1x80W T16, and 2x55W TC-LEL fluorescent lamps. Extruded aluminium body with white or grey paint finish, and 4mm thick screen-printed tempered glass. 3 size options: 100x587mm, 100x1487mm and 211x587mm. Light distribution: 82% indirect and 18% direct (TC-LEL version), 86% indirect and 14% direct (T16). Electronic control gear. Optional emergency lighting. Polycarbonate dust-protection screen. Complies with standard EN60598-1 and other specific standards.

#### Light emission

Direct/indirect

IP20  

### TECHNICAL DATA SHEET

#### Features

Product name:	Kalifa Wall TC-LEL 2x55W + emergency - White
Article Code:	M024327
Colour:	White
Material:	Extruded Aluminium
Series:	Architectural
Environment:	Indoor
Area contract:	

#### OPTICS

Emission:	Direct/indirect
-----------	-----------------

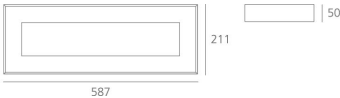
#### DIMENSIONS

Length:	(cm) 58.7
Width:	(cm) 21.1
Height:	(cm) 5
Cutout shape:	
Weight:	3.8
Glow Wire Test:	850 °

#### LAMPS NOT INCLUDED

Category:	FLUO
Number:	2
Lbs:	TC-LEL
Watt:	55
Socket:	2G11
Type:	FSDH
Luminous Flux (lm):	4800
Colour Rendering:	85
Colour temperature (K):	3000
Duration (h):	12000

#### Dimensions



#### LAMP

IP20  

#### ELECTRICAL

Starter:	Electronic integrated
Emergency availability:	integrated
Emergency duration:	1 hour
Voltage:	220V-240V